



**Ceylon Tea  
Brokers**

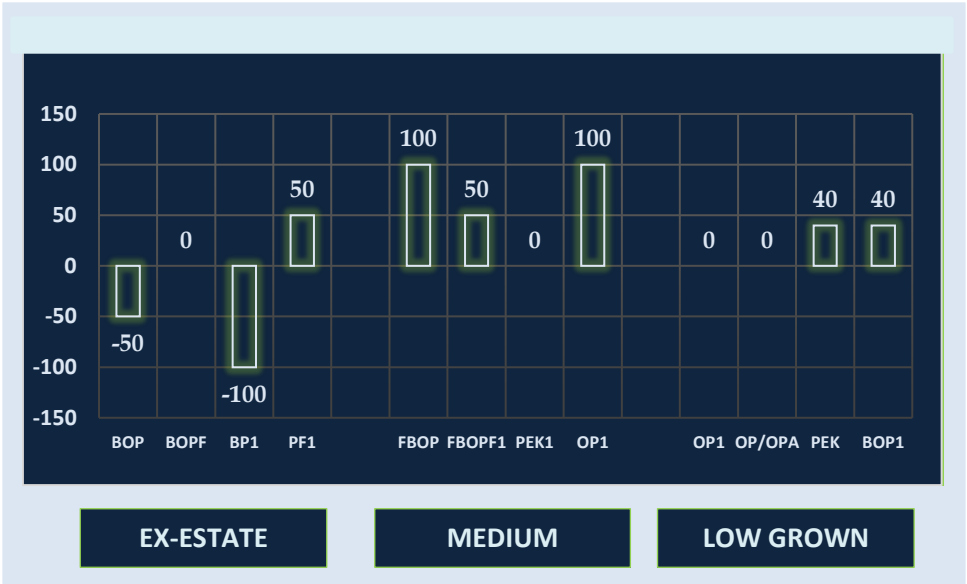


# MARKET SNAPSHOT

**SALE NO. 47 OF 29TH / 30TH NOVEMBER 2022**

CEYLON TEA BROKERS PLC  
Level 7, Millenium House, No.46/58, Nawam Mawatha, Colombo 2  
Tel: 011-460777 Fax: 011-4607788  
Email: [general@ceylontebrokers.com](mailto:general@ceylontebrokers.com)  
Web: [www.ceylontebrokers.com](http://www.ceylontebrokers.com)

**Ex-Estate met with fair demand; Low Grown met with good demand.**



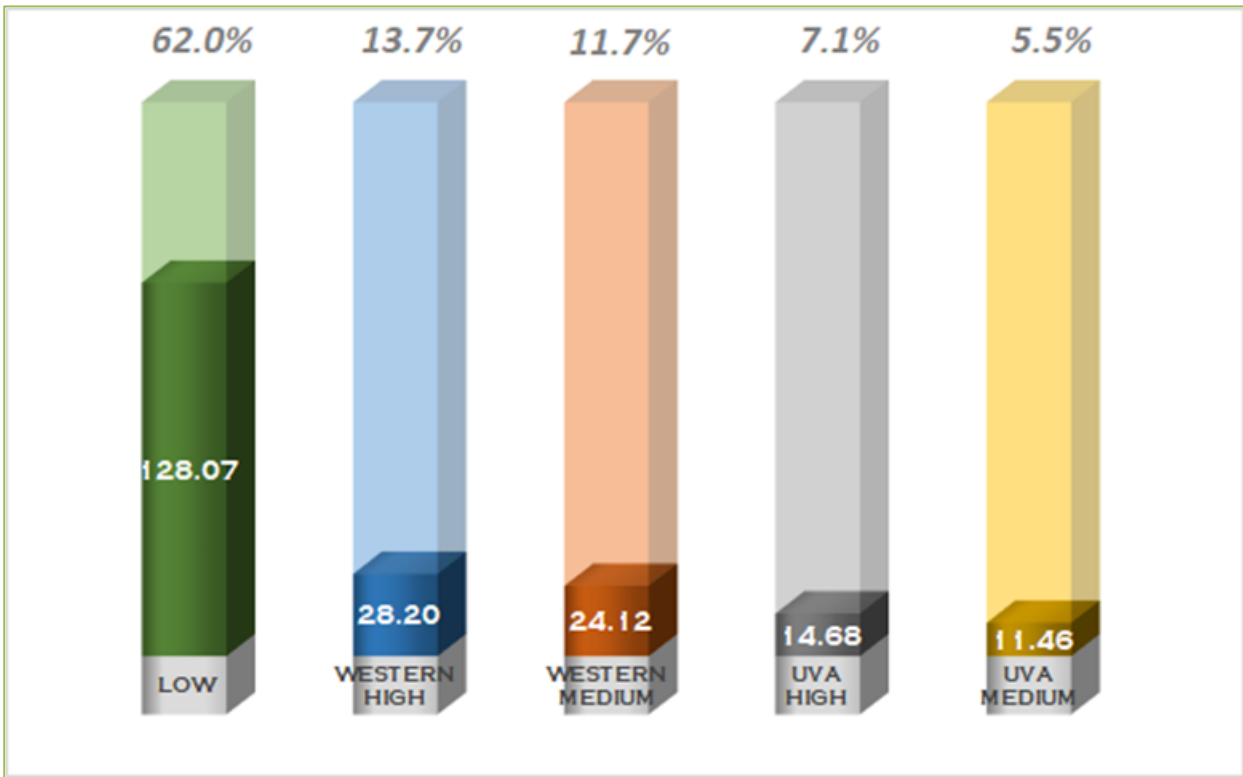
**Currency -30th Nov.**  
LKR/USD 361.25

**November 04th Sale**  
**National Average**  
Rs. 1,374.18

**Elevation Average**

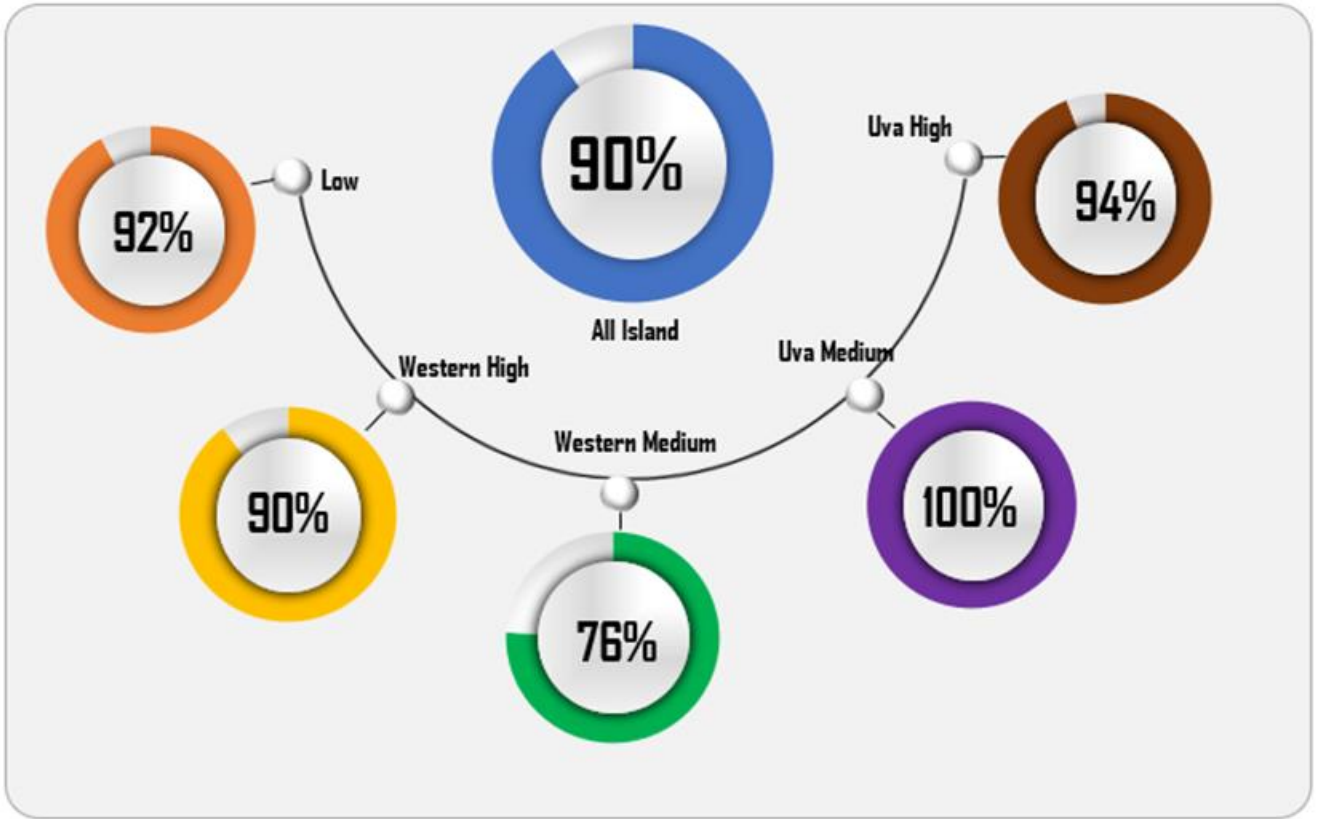
Elv	Rs	\$
High	1,355.73	4.00
Medium	1,154.18	3.50
Low	1,434.12	4.28

**ELEVATION WISE SRI LANKA TEA SOLD QUANTITY (IN MN KG)  
YTD OCTOBER – 2022**



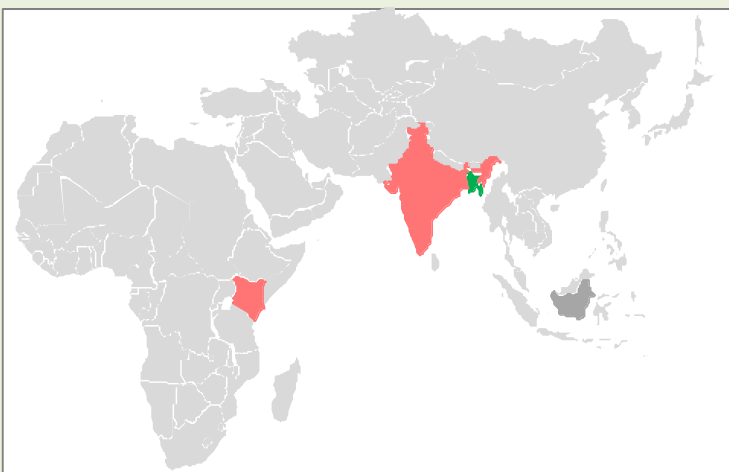
Source: MSL

**COMPOSITION OF ELEVATION WISE ORTHODOX TEA SOLD QUANTITY  
YTD OCTOBER – 2022**



Source: MSL

**MARKET MOVEMENT AT INTERNATIONAL AUCTION CENTERS THIS WEEK**



Bangladesh



India



Kenya



Indonesia market report details were not available at the time of printing this publication.

## COMMENTS

Sale	Ex-Estate		Low Grown (Leafy/Tippy)		Total	
	Qty	Demand	Qty	Demand	Qty	Demand
47	0.6 MKGs	Fair	1.8 Mkgs	Good	4.2 Mkgs	Good

WESTERN				
	SELECT BEST	BEST	BELOW BEST	PLAINER
BOP	↑ 50/-	Firm	↓ 50/-	↓ 50/-
BOPF	↑ 50/-	Firm	↓ 50/-	↓ 50/-

	NUWARA ELIYA	UDA PUSSELLAWA	UVA
BOP	Irregular	↓ 50/-	↓ 50/-
BOPF	↑ 50/-	Firm	Firm

	HIGH	MEDIUM	LOW
BP1	N/A	↓ 100/-	↓ 100/-
PF1	Firm	↑ 50/-	↑ 50/-

HIGH & MEDIUM				
	SELECT BEST	BEST	BELOW BEST	OTHERS
BOP1	↑ 100/-	↑ 50/-	↑ 50/-	↑ 50/-
OP1	↑ 100/-	↑ 200/-	↑ 200/-	↑ 200/-
FBOP	↑ 100/-	↑ 50/-	↑ 50/-	↑ 50/-
FBOPF1	↑ 50/-	↑ 50/-	Firm	Firm
PEK	↑ 50/-	Firm	Firm	Firm
PEK1	↑ 50/-	↑ 50/-	↑ 50/-	↑ 50/-
OP/OPA	↑ 50/-	↑ 50/-	↑ 50/-	Firm

LEAFY / SEMI LEAFY				
	SELECT BEST	BEST	BELOW BEST	OTHERS
OP1	Firm	↓ 50/-	Firm	Firm
BOP1	Firm	↑ 50/-	↑ 50/-	Firm
OP/OPA	Firm			
PEK	↑ 40/-			
PEK1	↑ 50/-			

SMALL LEAF / TIPPY				
FBOP	Firm	↓ 20/-	↑ 10/-	↑ 20/-
FBOP1	↑ 20/-	↑ 10/-	Firm	↑ 10/-
FBOPF1	↑ 40/-	↑ 20/-	↑ 20/-	Firm

PREMIUM FLOWERY	
Select Best	Firm
Best	↑ 400 - 600/-
Below Best	↑ 300 - 700/-
Others	↑ 100/-



Crude Oil

As at 30th November, 2022 – USD 83.73



Mombasa Auction

Demand: Lower demand

**HOLIDAY NOTICE**

Please note our Head Office, Warehouse & Sample Room will be closed for business on the following day:

**Wednesday, 07th December 2022 - Uduvap Full Moon Poya Day**

## CURRENCY BOARD – AS AT 30TH NOVEMBER 2022

	United States Dollars (USD)		European Community Euro (EUR)		United Kingdom pounds (GBP)	
	Corresponding		Corresponding		Corresponding	
	2022	2021	2022	2021	2022	2021
<b>Sri Lankan Rupee</b>	361.25	198.50	371.11	223.74	430.08	263.02

(Courtesy - Central Bank of Sri Lanka)

<b>Indian Rupee</b>	81.64	74.96	84.53	84.54	97.86	99.86
<b>Kenyan Shilling</b>	121.54	111.59	125.85	125.85	145.70	148.66
<b>Bangladesh Taka</b>	101.52	84.19	105.11	94.95	121.69	112.16
<b>Indonesian Rupiah</b>	15,724.70	14,340.90	16,282.00	16,174.10	18,849.40	19,105.10
<b>Malawi Kwacha</b>	1,021.44	804.73	1,057.64	907.59	1,224.41	1,072.06
<b>Vietnam Dong</b>	24,748.00	22,664.40	25,625.10	25,561.60	29,665.80	30,193.70

(Courtesy - Oanda Corporation)

## SRI LANKA RUPEE AGAINST US DOLLAR TIME PERIOD 24/11/2022 TO 30/11/2022 (SPOT RATE)

<b>24/11/2022</b>	360.99	<b>28/11/2022</b>	360.29	<b>30/11/2022</b>	361.25
<b>25/11/2022</b>	360.29	<b>29/11/2022</b>	361.24		

(Courtesy - Central bank of Sri Lanka)

## QUANTITY SOLD DURING THE PERIOD 21ST – 26TH NOVEMBER 2022

	2022		2021	
	WEEKLY	TODATE	WEEKLY	TODATE
<b>PRIVATE SALES</b>	79,835.30	3,799,898.58	90,760.00	5,292,728.00
<b>PUBLIC AUCTION</b>	4,202,626.00	219,677,531.00	5,184,871.00	263,001,890.00
<b>FORWARD CONTRACTS</b>	54,160.00	1,764,650.00	39,640.00	2,036,050.00
<b>DIRECT SALES</b>	-	-	-	-
<b>TOTAL</b>	4,336,621.30	225,242,079.58	5,315,271.00	270,330,668.00
<b>BMF EXCLUDED FROM PRIVATE SALE</b>	51,488.00	5,519,502.00	200,815.00	9,561,907.00

TEA  
TECH  
TIPS



*Reduce leaf to grade size, and as far as possible, in the wet stage (rolling room). Crushing and nipping after firing will result in loss of "bloom" and greatly reduced liquor properties.*

## CROP AND WEATHER (FOR THE PERIOD 21ST - 27TH NOVEMBER 2022)

The Western and Nuwara Eliya planting districts experienced sunny weather throughout the week. The Department of Meteorology forecasts scattered showers in the Western district and heavy showers with mist in Nuwara Eliya in the coming week.

The Uva's experienced clear weather whilst the Uda Pussellawa's reported gloomy conditions with occasional showers. Heavy showers are expected in Uva.

The Low Grown districts reported overcast conditions with occasional showers.

All districts maintained their crop intakes except for the Sabaragamuwa's which recorded a decline.

## WEATHER FORECAST (FOR THE PERIOD 01ST TO 07TH DECEMBER 2022)

	Thu (01/12)	Fri (02/12)	Sat (03/12)	Sun (04/12)	Mon (05/12)	Tue (06/12)	Wed (07/12)
<b>Galle</b>	31°/25°C 	30°/24°C 	30°/24°C 	29°/23°C 	30°/24°C 	32°/24°C 	32°/23°C 
<b>Matara</b>	33°/21°C 	34°/22°C 	33°/23°C 	33°/24°C 	32°/23°C 	33°/22°C 	34°/24°C 
<b>Ratnapura</b>	33°/22°C 	34°/22°C 	34°/20°C 	33°/20°C 	34°/19°C 	35°/22°C 	34°/21°C 
<b>Hatton/ Talawakelle</b>	25°/16°C 	26°/17°C 	25°/14°C 	26°/12°C 	26°/15°C 	26°/17°C 	28°/16°C 

## ORDER OF SALE THIS WEEK

EX EST	H/M-OFF GR & DUST	LEAFY/ SEMI LEAFY/ TIPPY/PREM & BOP1A
JK	Mercantile Produce Brokers (Pvt) Ltd	<b>Ceylon Tea Brokers PLC</b>
MB	Forbes & Walker Tea Brokers (Pvt) Ltd	Forbes & Walker Tea Brokers (Pvt) Ltd
<b>CTB</b>	Bartleet Produce Marketing (Pvt) Ltd	Bartleet Produce Marketing (Pvt) Ltd
LC	Lanka Commodity Brokers	Mercantile Produce Brokers (Pvt) Ltd
BA	<b>Ceylon Tea Brokers PLC</b>	Lanka Commodity Brokers
ES	Eastern Brokers Ltd	Eastern Brokers Ltd
FW	John Keells PLC	John Keells PLC
AS	Asia Siyaka Commodities PLC	Asia Siyaka Commodities PLC

CATALOGUE	LOTS	QTY (KGS)
EX-ESTATE	547	618,611
HIGH AND MEDIUM	1,238	525,630
LOW GROWN (LEAFY)	1,539	558,780
LOW GROWN (SEMI LEAFY)	1,131	460,272
LOW GROWN (TIPPY)	1,767	854,673
OFF GRADES + BOP1A	1,722	867,837
DUSTS	339	311,010
PREMIUM FLOWERY	385	55,421
<b>TOTAL</b>	<b>8,668</b>	<b>4,252,234</b>

## HIGH GROWN TEAS

**BOP** Best Westerns were firm to Rs.50/- per kg dearer. Below best and plainer types were Rs.50/- per kg easier on last. Nuwara Eliya's were firm. Uda Pussellawa's and Uva's easier by Rs.50/- per kg.

**BOPF** Best Westerns were firm to selectively dearer. Below best and plainer teas declined by Rs.50/- per kg. Nuwara Eliya's gained marginally. Uda Pussellawa's held firm. Uva's maintained.

## MEDIUM GROWN TEAS

**BOPF** Select best gained by Rs. 50/- per kg. Others maintained.

**BOP1/OP1** **BOP1:** Select best dearer by Rs. 100/- per kg whilst all others moved up by Rs. 50/- per kg.  
**OP1:** Select best gained by Rs. 100/- per kg whilst all others dearer by Rs. 100/- per kg.

**OP/OPA** In general, dearer by Rs. 50/- per kg whilst the poorer sorts were firm.

**PEKOE/PEKOE1** **PEK:** Select best gained by Rs. 50/- per kg whilst all others maintained.  
**PEK1:** In general, dearer by Rs. 50/- per kg.

**FBOP/FBOPF1** **FBOP:** Select best dearer by Rs. 100/- per kg whilst all others moved up by Rs. 50/- per kg.  
**FBOPF1:** Select best and best dearer by Rs. 50/- per kg whilst all others maintained.

## CTC

**HIGH GROWN** **BP1** – Hardly any offerings.  
**PF1** – Firm.

**MEDIUM GROWN** **BP1** – Easier by Rs.100/- per kg.  
**PF1** – Gained by Rs.50/- per kg.

**LOW GROWN** **BP1** – Declined by Rs.100/- per kg.  
**PF1** – Moved up by Rs.50/- per kg.

QUOTATIONS-HIGH GROWNS	BOP		BOPF	
BEST WESTERNS	1650	2000	1650	1900
BELOW BEST WESTERNS	1500	1600	1550	1600
PLAINER WESTERNS	300	1480	1400	1500
NUWARA ELIYAS	1380	1600	1300	1340
UDAPUSSELLAWAS	1140	1460	1140	1700
BEST UVAS	1400	1500	1400	1650
OTHER UVAS	1200	1380	1220	1380
GOOD MEDIUMS	1500	2300	N/A	
POOR MEDIUMS	1000	1450	860	1140
QUOTATIONS – UNORTHODOX	BP1		PF1	
(CTC) CTC (High & Medium)	1280		820	1400
CTC (Low)	1080	1100	1050	1900



- BOP1** Few Select best BOP1s maintained, whilst best and below best were irregularly lower. Poorer types maintained.
- OP1** Select best together with best and below best were firm to dearer. Poorer sorts were fully firm.
- OP** Well-made varieties were firm, whilst best and below best were firm to dearer. Poorer sorts maintained.
- OPA** Select best were firm whilst best and below best were firm to dearer. Teas at the lower end maintained.
- PEKOE/PEKOE1** Select best teas together with full range of bold PEKs were fully firm. Cleaner below best and the rest were dearer.
- FBOP/FBOP1** Select best and best increased in value, whilst others held firm.
- BOP** Few well-made invoices were firm whilst others were slightly easier.
- BOPF** In general, firm market.
- FBOPF/FBOPF1** Select best and best increased in value, whilst the below best and bottom held firm.

QUOTATIONS	SELECT BEST	BEST	BELOW BEST	OTHER
BOP1	2200-2900	1600-2000	1200-1400	800-1000
OP1	2200-3150	1800-2000	1400-1600	600-1200
OP	1900-2300	1500-1800	1300-1500	600-1100
OPA	1800-2350	1500-1800	1300-1500	600-1100
PEKOE	1800-2600	1600-1800	1400-1600	600-1200
PEKOE1	2000-2600	1600-2000	1400-1600	600-1200
FBOP1	2100-2700	1700-2000	1000-1600	Below 980
FBOP	2000-2700	1600-1900	1000-1500	Below 900
BOP	1900-2500	1400-1800	920-1300	Below 900
BOPF	1900-2500	1500-1800	950-1400	Below 940
FBOPF1	2000-2600	1300-1900	950-1200	Below 940
FBOPF	2300-3200	1700-2200	1000-1600	Below 980
FFSP/FFEXSP/FFEXSP1	7000-8950	4600-6000	3600-4500	Below 3500



## OFF GRADES

**FGS/FGS1** High grown varieties declined Rs. 20-40/- per kg. Medium and low grown varieties maintained. CTC's were firm to Rs. 10-20/- per kg dearer.

**BM/BP** BM – In general firm.  
BP – Eased by Rs. 20-40/- per kg.

**BOP1A** Select best declined by Rs.50-100/- per kg. Below best were gained by Rs.20-30/- per kg, whilst the poorer sorts were easier by Rs. 10-20/- per kg.

	HIGH		MEDIUM		LOW	
<b>BETTER FNGS</b>	1000	1440	900	1000	900	980
<b>OTHER FNGS</b>	560	980	600	880	610	890
<b>P.FGS (CTC)</b>	N/A		660	830	480	1480
<b>BP</b>	670	1220	750	1380	580	1500
<b>BM</b>	690	890	480	940	490	1650
<b>BOP1A</b>	700	870	700	1300	600	1850

## DUST

**DUST1** Best high grown and below best were dearer by Rs. 50 -100/- per kg. CTC's were firm. Best and below best Low grown were irregular.

**DUST** Clean secondaries and low grown appreciated by Rs. 20-30/- per kg.

	HIGH		MEDIUM		LOW	
<b>PRIMARY DUSTS</b>	1400	1800	1120	1600	960	1440
<b>SECONDARY DUSTS</b>	800	1100	680	1000	600	850
<b>PDUST (CTC)</b>	1140	1380	1100	1420	1300	1900

## TOP PRICES - SALE NO. 47 OF 29TH / 30TH NOVEMBER 2022

<b>WESTERN MEDIUM</b>			
Nayapane	BOP	2,300.00	
Hatale	BOPSp	1,950.00	
Ancoombra	BOPF/BOPFSp	1,500.00	
Dartry Valley	BOP1	2,850.00	
Doombagastalawa	FBOP/FBOP1	3,300.00	
Craighead	FBOPF/FBOPF1	2,200.00	
Greenwood	OP/OPA	1,700.00	
New Fernland	OP/OPA	1,700.00	
Dehiwatte Super	OP/OPA	1,700.00	
Orange Field	OP/OPA	1,700.00	
Dartry Valley	OP1	2,350.00	
Doombagastalawa	PEK/PEK1	2,250.00	
Weralugolla	PEK/PEK1	2,250.00	
<b>WESTERN HIGH</b>			
Bambrakelly	BOP	2,000.00	
Queensberry	BOPSp	1,950.00	
Great Western	BOPF/BOPFSp	1,900.00	
Waltrim	BOPF/BOPFSp	1,900.00	
Inverness	BOP1	2,050.00	
Great Western	FBOP/FBOP1	2,800.00	
Glenloch	FBOPF/FBOPF1	2,000.00	
<b>Frotoft Super</b>	<b>FBOPF/FBOPF1</b>	<b>1,850.00</b>	<b>@</b>
St Andrews	FBOPF/FBOPF1	1,850.00	
Inverness	FBOPF/FBOPF1	1,850.00	
Venture	OP/OPA	1,700.00	
Inverness	OP1	2,050.00	
Bambrakelly	PEK/PEK1	1,900.00	
<b>NUWARA ELIYA</b>			
Lovers Leap	BOP	1,600.00	
Court Lodge	BOPF/BOPFSp	1,340.00	
Court Lodge	FBOP/FBOP1	1,950.00	
Court Lodge	PEK/PEK1	1,700.00	
<b>UDA PUSSELLAWAS</b>			
Kirklees	BOP	1,440.00	
Delmar	BOPSp	1,700.00	
Kirklees	BOPF/BOPFSp	1,700.00	
Blairlomond	FBOP/FBOP1	2,150.00	
<b>Alma</b>	<b>FBOP/FBOP1</b>	<b>1,950.00</b>	<b>@</b>
Gonapitiya	FBOPF/FBOPF1	1,850.00	
Blairlomond	FBOPF/FBOPF1	1,850.00	
<b>Alma</b>	<b>OP/OPA</b>	<b>1,600.00</b>	<b>@</b>
<b>Alma</b>	<b>OP1</b>	<b>1,850.00</b>	<b>@</b>
<b>Alma</b>	<b>PEK/PEK1</b>	<b>2,150.00</b>	<b>@</b>

<b>UVA MEDIUM</b>			
Dickwella	BOP	1,900.00	
Demodera 'S'	BOP	1,900.00	
Halpewatte Uva	BOPSp	1,950.00	
Dickwella	BOPF/BOPFSp	1,950.00	
High Spring	BOPF/BOPFSp	1,950.00	
Maratenne	BOP1	2,900.00	
Halpewatta Uva	FBOP/FBOP1	2,050.00	
Halpewatte Uva	FBOPF/FBOPF1	2,100.00	
Ury	OP/OPA	1,750.00	
Wewesse	OP1	2,000.00	
Sarnia Plaiderie	PEK/PEK1	2,250.00	
<b>UVA HIGH</b>			
Aislaby	BOP	1,850.00	
<b>Ranaya</b>	<b>BOPSp</b>	<b>1,950.00</b>	<b>@</b>
Bandaraeliya	BOPF/BOPFSp	1,650.00	
Uva Highlands	BOP1	1,800.00	
<b>Ranaya</b>	<b>FBOP/FBOP1</b>	<b>2,150.00</b>	<b>@</b>
<b>Ranaya</b>	<b>FBOPF/FBOPF1</b>	<b>2,050.00</b>	<b>@</b>
<b>Ranaya</b>	<b>OP</b>	<b>1,700.00</b>	<b>@</b>
<b>Ranaya</b>	<b>OPA</b>	<b>1,600.00</b>	<b>@</b>
Uva Highlands	OP1	1,800.00	
<b>Mount Uva</b>	<b>OP1</b>	<b>1,750.00</b>	<b>@</b>
Aislaby	OP1	1,750.00	
Battawatte	PEK/PEK1	2,150.00	
<b>Ranaya</b>	<b>PEK/PEK1</b>	<b>2,100.00</b>	<b>@</b>
Battawatte	PEK/PEK1	2,100.00	
<b>UNORTHODOX HIGH</b>			
Dunsinane CTC	PF1	1,400.00	
<b>Mount Uva CTC</b>	<b>BPS</b>	<b>710.00</b>	<b>@</b>
<b>UNORTHODOX MEDIUM</b>			
New Peacock CTC	PF1	1,340.00	
Delta CTC	BP1	1,280.00	
Donside CTC	BPS	1,100.00	
<b>UNORTHODOX LOW</b>			
Cee Tee Hills CTC	PF1	1,900.00	
Cecilayan CTC	BP1	1,100.00	

## TOP PRICES - SALE NO. 47 OF 29TH / 30TH NOVEMBER 2022

LOW GROWN				DUSTS			
Hidellana	BOP1	2,900.00		Mattakelle	DUST1	1,800.00	
Sithaka	OP1	3,150.00		Wattegodde	DUST1	1,800.00	
Liyonta	OP	2,300.00		Great Western	DUST1	1,800.00	
Rotumba	OP	2,250.00		Ceciliyan CTC	DUST1	1,800.00	
<b>Nilgiri</b>	<b>OP</b>	<b>2,200.00</b>	<b>@</b>	Ceciliyan CTC	PD	1,900.00	
<b>Sihara</b>	<b>OP</b>	<b>2,200.00</b>	<b>@</b>				
<b>Lickra</b>	<b>OP</b>	<b>2,200.00</b>	<b>@</b>	PREMIUM FLOWERY			
Mahaliyadda	OP	2,200.00		<b>Rajjuruwatta Super</b>	<b>FBOPFSp</b>	<b>8,800.00</b>	<b>@</b>
Dampahala	OP	2,200.00		Alhewana Super	FBOPFSp	8,700.00	
Liyonta	OPA	2,350.00		<b>Mulatiyana Hills</b>	<b>FBOPFSp</b>	<b>8,500.00</b>	<b>@</b>
Green Lanka	OPA	2,300.00		<b>Talangaha</b>	<b>FBOPFSp</b>	<b>7,900.00</b>	<b>@</b>
<b>A C U Super</b>	<b>OPA</b>	<b>2,250.00</b>	<b>@</b>	New Deniyaya	FBOPFExSp	8,950.00	
<b>Lions</b>	<b>OPA</b>	<b>2,250.00</b>	<b>@</b>	<b>Lickra</b>	<b>FBOPFExSp</b>	<b>8,500.00</b>	<b>@</b>
Rotumba	OPA	2,250.00		<b>Graceland</b>	<b>FBOPFExSp</b>	<b>7,850.00</b>	<b>@</b>
Liyonta	PEK	2,600.00		<b>Nilrich</b>	<b>FBOPFExSp</b>	<b>7,500.00</b>	<b>@</b>
Hidellana	PEK1	2,600.00		<b>Wathurawila</b>	<b>FBOPFExSp1</b>	<b>7,850.00</b>	<b>@</b>
<b>Rajjuruwatta Super</b>	<b>PEK1</b>	<b>2,500.00</b>	<b>@</b>	<b>Nilrich</b>	<b>FBOPFExSp1</b>	<b>7,050.00</b>	<b>@</b>
<b>Nilgiri</b>	<b>PEK1</b>	<b>2,500.00</b>	<b>@</b>	OFF GRADES			
<b>Nilrich</b>	<b>PEK1</b>	<b>2,500.00</b>	<b>@</b>	Holyrood	FGS/FGS1	1,440.00	
Magedara	PEK1	2,500.00		Hingalgoda CTC	PF	1,480.00	
Navinda	PEK1	2,500.00		Hingalgoda CTC	PF	1,400.00	
<b>Matuwagalla Super</b>	<b>PEK1</b>	<b>2,450.00</b>	<b>@</b>	<b>Liyonta CTC</b>	<b>PF</b>	<b>1,000.00</b>	<b>@</b>
<b>A C U Super</b>	<b>PEK1</b>	<b>2,450.00</b>	<b>@</b>	Gunawardana	BM	1,650.00	
<b>Lions</b>	<b>PEK1</b>	<b>2,450.00</b>	<b>@</b>	Aruna	BP	1,500.00	
<b>Veddagala</b>	<b>PEK1</b>	<b>2,450.00</b>	<b>@</b>	Natherville	BP	1,500.00	
<b>Wathurawila</b>	<b>PEK1</b>	<b>2,450.00</b>	<b>@</b>	Chandrika Estate	BP	1,500.00	
<b>Golden Garden</b>	<b>PEK1</b>	<b>2,450.00</b>	<b>@</b>	<b>Nilgiri</b>	<b>BP</b>	<b>1,480.00</b>	<b>@</b>
Suduwelipothahena Super	PEK1	2,450.00		Brombil	BP	1,480.00	
Mahaliyadda	BOP	2,500.00		<b>Mihimithu</b>	<b>BP</b>	<b>1,400.00</b>	<b>@</b>
New Panilkanda	BOP	2,450.00		Nandana	BP	1,400.00	
<b>Brombil</b>	<b>BOP</b>	<b>2,400.00</b>	<b>@</b>	Golden Garden	BOP1A	1,850.00	
Hidellana	BOP	2,400.00		Aldora	BOP1A	1,850.00	
Arbour Valley	BOPSp	2,500.00					
Sithaka	BOPF	2,500.00					
Mahaliyadda	BOPFSp	2,300.00					
<b>Wathurawila</b>	<b>BOPFSp</b>	<b>2,250.00</b>	<b>@</b>				
<b>Thundola Ella</b>	<b>BOPFSp</b>	<b>2,150.00</b>	<b>@</b>				
Sithaka	FBOP	2,850.00					
Brombil	FBOP1	2,700.00					
Katanwila	FBOPF	3,200.00					
Rotumba	FBOPF	3,200.00					
New Hopewell	FBOPF	2,950.00					
<b>Himara</b>	<b>FBOPF</b>	<b>2,900.00</b>	<b>@</b>				
Sierra	FBOPF1	2,600.00					

## FUTURE SALES INFORMATION

### SALE NO 48 OF 05TH / 06TH DEC 2022

EX-ESTATE	H/M-OFF GR & DUST	LEAFY/ SEMI LEAFY/ TIPPY/PREM & BOP1A
MB	Forbes & Walker Tea Brokers (Pvt) Ltd	Forbes & Walker Tea Brokers (Pvt) Ltd
<b>CTB</b>	Bartleet Produce Marketing (Pvt) Ltd	Bartleet Produce Marketing (Pvt) Ltd
LC	Lanka Commodity Brokers	Mercantile Produce Brokers (Pvt) Ltd
BA	<b>Ceylon Tea Brokers PLC</b>	Lanka Commodity Brokers
ES	Eastern Brokers Ltd	Eastern Brokers Ltd
FW	John Keells PLC	John Keells PLC
AS	Asia Siyaka Commodities PLC	Asia Siyaka Commodities PLC
JK	Mercantile Produce Brokers (Pvt) Ltd	<b>Ceylon Tea Brokers PLC</b>

**Buyers Prompt: 12.12.2022**

**Sellers Prompt: 13.12.2022**

### AWAITING SALE - CATALOGUE DETAILS

	SALE OF 05TH / 06TH DEC 2022		SALE OF 13TH / 14TH DEC 2022	
	LOTS	QTY(KGS)	LOTS	QTY(KGS)
<b>EX-ESTATE</b>	547	605,881	588	658,721
<b>HIGH AND MEDIUM</b>	1,195	523,330	1,296	569,541
<b>LOW GROWN (LEAFY)</b>	1,797	676,732	1,808	699,343
<b>LOW GROWN (SEMI LEAFY)</b>	1,397	597,084	1,423	617,911
<b>LOW GROWN (TIPPY)</b>	1,932	979,072	2,070	1,064,487
<b>OFF GRADES+BOP1A</b>	2,219	1,097,683	2,140	1,084,711
<b>DUSTS</b>	434	404,846	435	417,034
<b>PREMIUM FLOWERY</b>	365	61,232	384	63,610
<b>TOTAL</b>	<b>9,886</b>	<b>4,945,860</b>	<b>10,144</b>	<b>5,175,358</b>
<b>MAIN SALE &amp; EX ESTATE CLOSED ON</b>	<b>17TH NOVEMBER 2022</b>		<b>24TH NOVEMBER 2022</b>	

#### **SALE NO.50 – 19TH / 20TH DECEMBER 2022**

Ex-Estate catalogue and Main Sale catalogues are scheduled to be closed on the 01st December 2022.

#### **SALE NO.01 – 03RD / 04TH JANUARY 2023**

Ex-Estate catalogue and Main Sale catalogues are scheduled to be closed on the 08th December 2022.

#### **SALE NO.02 – 10TH / 11TH JANUARY 2023**

Ex-Estate catalogue and Main Sale catalogues are scheduled to be closed on the 15th December 2022.

## ELEVATION WISE – STATISTICS – COLOMBO AUCTION AVERAGES

Elevation	LAST WEEK	WEEK BEFORE LAST	LAST YEAR	YEAR BEFORE
	(RS)	(RS)	(RS)	(RS)
	Sale- 22.11.2022	Sale- 15.11.2022	Corres 2021	Corres 2020
Uva High	1235.06	1202.51	571.57	581.83
Western High	1450.81	1444.14	655.21	684.52
CTC High	1217.79	1220.36	582.83	662.13
Total High Grown	1359.22	1350.79	627.88	649.46
Uva Medium	1293.96	1209.66	593.08	577.63
Western Medium	1173.06	1129.76	541.28	576.04
CTC Medium	1108.11	997.05	491.26	597.99
Total Medium Grown	1216.83	1157.76	558.67	576.51
Orthodox Low	1533.96	1510.88	666.12	676.43
CTC Low	982.80	934.76	510.93	544.77
Total Low Grown	1496.37	1463.97	656.71	665.90
<b>TOTAL</b>	<b>1426.86</b>	<b>1398.21</b>	<b>634.86</b>	<b>648.36</b>

Elevation	LAST WEEK	WEEK BEFORE LAST	LAST YEAR	YEAR BEFORE
	(\$)	(\$)	(\$)	(\$)
	Sale- 22.11.2022	Sale- 15.11.2022	Corres 2021	Corres 2020
Uva High	3.40	3.31	2.83	3.14
Western High	3.99	3.97	3.24	3.70
CTC High	3.35	3.36	2.88	3.58
Total High Grown	3.74	3.72	3.11	3.51
Uva Medium	3.56	3.33	2.93	3.12
Western Medium	3.23	3.11	2.68	3.11
CTC Medium	3.05	2.74	2.43	3.23
Total Medium Grown	3.35	3.19	2.76	3.11
Orthodox Low	4.22	4.16	3.29	3.65
CTC Low	2.70	2.57	2.53	2.94
Total Low Grown	4.12	4.03	3.25	3.60
<b>Weekly Total (USD)</b>	<b>3.93</b>	<b>3.85</b>	<b>3.14</b>	<b>3.50</b>
<b>Exchange Rate (LKR)</b>	<b>363.50</b>	<b>363.50</b>	<b>202.20</b>	<b>185.21</b>

Elevation	TODATE	TODATE	TODATE	TODATE	TODATE	TODATE
	2020	2021	2022	2020	2021	2022
	(RS)	(RS)	(RS)	(\$)	(\$)	(\$)
Uva High	547.23	549.12	1085.64	2.96	2.77	3.39
Western High	596.69	604.75	1099.76	3.23	3.06	3.44
CTC High	548.46	533.05	953.75	2.97	2.69	2.98
Total High Grown	581.15	587.39	1094.87	3.15	2.97	3.42
Uva Medium	582.92	567.24	1144.08	3.16	2.87	3.58
Western Medium	533.06	535.04	961.84	2.89	2.70	3.01
CTC Medium	504.56	497.47	824.25	2.73	2.51	2.58
Total Medium Grown	548.74	545.03	1020.91	2.97	2.75	3.19
Orthodox Low	683.52	653.75	1363.33	3.70	3.30	4.26
CTC Low	482.97	503.29	945.90	2.61	2.54	2.96
Total Low Grown	668.82	645.38	1334.57	3.62	3.26	4.17
<b>TOTAL</b>	<b>630.35</b>	<b>616.30</b>	<b>1233.11</b>	<b>3.41</b>	<b>3.11</b>	<b>3.86</b>
<b>Cumulative Sale Averages – 1 USD= Rs. (Monthly Weighted Average)</b>				<b>184.73</b>	<b>197.92</b>	<b>319.86</b>

(Source: MSL/ CBSL)

## WORLD TEA PRODUCTION (IN MILLION KILOS)

Country	Month	Month		To-date		Diff(+/-)
		2021	2022	2021	2022	2021 vs 2022
Sri Lanka	Oct	24.2	18.8	258.9	211.4	-47.5
Bangladesh	Oct	14.58	11.38	79.33	75.21	-4.12
North India	Sep	142.6	166.7	781.5	808.9	27.4
South India	Sep	20.6	23.3	181.9	175.8	-6.1
Malawi	Sep	4.03	3.63	42.5	39.3	-3.2
Kenya	Jul	34.7	33.8	308.8	304.2	-4.6

(Source: Africa Tea Brokers/National Brokers Ltd)

## MOMBASA TEA AUCTION OF ALE OF 28TH, 29TH & 30TH NOVEMBER 2022

Reduced demand in most categories on offer with prices irregular following quality for the 221,580 packages (14,896,114.00 kilos) available; 29.90% were neglected.

Pakistan Packers, Bazaar, and Afghanistan lent strong support with Yemen and other Middle Eastern countries maintaining good enquiry. Kazakhstan, other CIS states and UK were more selective while Sudan, Egyptian Packers and Iran reduced activity. Russia were less active while Local Packers maintained interest. Somalia maintained activity at the lower end of the market.

**BP1:** Saw irregular enquiry and ranged between firm to USC9 dearer for most lines with a few selected invoices gaining between USC29 and USC56 to easier by USC18. Brighter – Were irregular varying between firm to USC13 dearer and select lines advanced by up to USC35 to USC17 below last rates. Mediums – KTDA mediums were fully firm for most teas but some lines were irregular ranging between USC20 dearer to USC16 below previous levels. Plantation mediums were steady to USC14 dearer. Lower Mediums – Varied between firm to USC12 dearer to USC14 below previous prices. Plainer – Were discounted by up to USC30 but a few selected invoices advanced by up to USC26.

**PF1:** Best – Were mostly steady to USC10 dearer but a few teas eased by a similar margin. Brighter – Irregular ranging between firm to USC8 dearer to easier by USC4. Mediums – KTDA mediums varied between steady to USC10 dearer to USC8 below last rates while plantation mediums met reduced competition and lost up to USC20. Lower Mediums – Were discounted by up to USC24. Plainer – Saw less enquiry and most teas lost up to USC17 with only a few lines dearer by up to USC8.

**PDUST:** Best – Met irregular activity and varied between steady to USC19 dearer to USC20 below previous levels. Brighter – Were firm to easier by up to USC18. Mediums – KTDA mediums were mostly steady at last prices but a few select invoices lost up to USC26 with plantation mediums firm to USC11 easier. Lower Medium – Were a weak feature and shed by up to USC30. Plainer – Were discounted by up to USC20.

**DUST1:** Best – Irregular ranging between firm to USC23 dearer to easier by USC12. Brighter – Were steady to USC6 below last rates. Mediums – KTDA mediums were firm to USC10 easier for most of the teas with only a few lines advancing by up to USC13. Plantation mediums were irregularly easier by up to USC19 but selected invoices gained up to USC20. Lower Medium – Lost up to USC20. Plainer – Firm to USC13 easier.

**SECONDARY GRADES (S1)** – In the Secondary Catalogues, best BPs gained while others tended easier; best PFs appreciated with others firm. Clean well sorted coloury Fannings held value with similar DUSTs firm. Other Fannings were barely steady while DUSTs sold at previous rates. BMFs were readily absorbed.

(Courtesy - Africa Tea Brokers Limited)

## BANGLADESH AUCTION OF 28TH NOVEMBER 2022

**CTC LEAF:** 58,775 packages of Current Season teas on offer met with a stronger demand.

**BROKENS:** The best varieties were well supported and were fully firm whilst good types met with a stronger demand and advanced in price following competition. There was also quite a fair demand for the Medium varieties which were generally steady. Plain teas saw a little more demand at around last levels. There was better disposal of BLF varieties at last levels with less withdrawals.

**FANNINGS:** Best Fannings continued to attract strong demand at around firm rates. Good varieties saw stronger demand with prices appreciating further. Medium types were well absorbed at steady levels. Plain varieties saw a little more demand and were about steady with fewer withdrawals. BLF teas had a better sale at steady rates.

**CTC DUST:** 12,824 packages of Current Season teas on offer met with good demand. Good liquoring Dusts fetched firm to occasionally dearer prices. Mediums sold well at around last levels. Plain and BLF Dusts were once again an easier market and saw fair withdrawals. Blenders lent strong support with fair interest from the Loose tea buyers.

**COMMENTS:** Blenders operated very strongly across the board especially on bright liquoring varieties. Loose tea buyers were not as active as in the last week. Dusts sold well.

**(Courtesy - National Brokers Limited)**

## KOLKATA AUCTION OF 29TH / 30TH NOVEMBER 2022

Lower demand for good Assams at easier levels. Good demand for medium Assams at steady levels. Plainer Dooars seen so far are irregularly easier. W I - Operating . HUL no activity . TCPL operating, Internal operating. Based on AB's Catalogue.

**(Courtesy - Associated Brokers (Pvt) Ltd., Kolkata)**

## GUWAHATI AUCTION OF 29TH NOVEMBER 2022

Less demand at irregularly easier levels. Based on ETB's 70% sell and Par's 54 % (selling).HUL/Western India/Internal operating. TCPL very selective.

**Courtesy - Associated Brokers (Pvt) Ltd., Guwahati.**

## MALAWI AUCTION OF 30TH NOVEMBER 2022

There was continued selective demand at generally firm rates for the limited quantity on offer.

BP1 were barely steady where sold.

PF1SC - N/A.

PF1 were supported at firm levels.

PD/D1 - N/A.

Secondaries met selective interest levels where sold.

**(Courtesy - Tea Brokers Central Africa Limited)**

## JAKARTA /COCHIN AUCTION

The above market report details were not available at the time of printing this publication.