



# CEYLON TEA BROKERS PLC

## Tea Market Report

Sale No.09 – Sale of 02<sup>nd</sup> / 03<sup>rd</sup> March 2015  
No 43, Jawatta Road, Colombo 5.  
Tel : 011-4607777 Fax: 011-4607788

Email: [general@ceylontebrokers.com](mailto:general@ceylontebrokers.com): Web: [www.ceylontebrokers.com](http://www.ceylontebrokers.com)

### C O M M E N T S

This week a total quantity of 7.2 m kgs was offered at the auction. Ex estates consisted 1 m kgs approximately and met with lower demand.

Ex-estate saw a fair number of bright invoices on offer. A few invoices from Uvas and Nuwara Eliyas witnessed quality and met with good demand from the shippers. Teas with average quality met with Luke warm support.

A few select best BOP/BOPFs with good quality appreciated by Rs.10 – 20 per kg followed by airmail inquiry. Below best BOP/BOPFs declined by Rs.10 – 20 per kg. A few bright Nuwar Eliya BOPs and PEKs met with good demand. Quality Nuwara Eliya PEKs and FBOPs met with strong support from shippers to Japan. Uva/ Udapussellawas declined overall by Rs.10 – 15 per kg.

Medium Grown Orthodox varieties sold firm to last week's levels. The liquoring leafy's especially FBOPs met with good demand with some of the invoices fetching around Rs.900 – 1000 levels.

In the CTC category BP1s declined allround whilst the corresponding PF1s met with lower demand and some of the poor invoices were difficult of sale.

Low Grown consisted 3.4 m kgs in the Leafy & Tippy catalogues and met with lower demand. Select best OP1s sold firm. Select best BOP1s along with others declined. Select best OP/OPAs sold lower along with the below best varieties. The bottom end OP/OPAs continued to meet with good demand with shippers to Iraq and Libya being active. Select best PEK/PEK1s met with good demand and sold firm. Below best PEKs eased marginally. Shippers to Turkey and Syria were active on PEKs. Russia was less active at this auction and showed tepid interest.

In the small leaf tippy catalogues a few select best FBOPs sold firm whilst others tended easier by Rs.10 – 15 per kg. FF1s declined overall by Rs.10 – 15 per kg. FFs met with better demand on last whilst the Tippy teas met with good demand and tended dearer.

This week saw a depressed market in the Ex estate and the Low Grown orthodox categories.

Currency devaluation as well as the Political instability in most of the Tea importing countries had a direct impact at the Colombo Auction prices. The Ukraine currency hryvnia has depreciated 70% since the start of 2014 whilst the Ruble depreciation has also placed severe constraints on our tea export markets.

Crude Oil price continued to be volatile and is around \$ 61 per barrel.

**Sri Lanka Tea Sale Averages for the Month of February 2015** recorded Rs.418.29 vis-à-vis Rs.481.83 (-Rs.63.54) in 2014. Cumulative figure for Jan/Feb stood at Rs.421.36 vis-à-vis Rs.495.25 (- Rs.73.89) in 2014. High Grown for the month of February recorded Rs.412.50 as against Rs.441.12 (- Rs.28.62) in 2014. Medium Grown recorded Rs.390.50 vis-à-vis Rs.420.43 (- Rs.29.93) in 2014. Low Grown recorded Rs.425.58 vis-à-vis Rs.510.37 (- Rs.84.79) in 2014. (Please refer page no.13. for more details)

**Sri Lanka's Tea Production for the month of January 2015** amounted to 23.26 Mn/Kg, vis-à-vis 23.74 Mn/Kg in 2014 (-0.48 Mn/Kg).

Elevation wise analysis shows that High Grown Tea Production has declined in 2015 by 0.61 Mn/Kg whilst Medium Grown recorded 3.14 Mn/Kg in 2015 vis-à-vis 3.45 Mn/Kg in 2014 (-0.31 Mn/Kg). Low Grown recorded 15.21 Mn/Kg vis-à-vis 14.77 Mn/Kg in 2014 (+0.44 Mn/Kg). (Please refer page no.12 for more details)

**Last week**, Westerns/ Nuwara Eliyas/ Uva/Udapussellawas and Low Grown districts experienced fairly bright mornings with afternoon showers.

Crop Intake - All Planting districts reported a moderate increase in the crop intake.

### Currency Board– As at 03<sup>rd</sup> Mar

|                   | United States Dollars (USD) |                    | European Community Euro (EUR) |                    | United Kingdom Pounds (GBP) |                    |
|-------------------|-----------------------------|--------------------|-------------------------------|--------------------|-----------------------------|--------------------|
|                   | 2015                        | Corresponding 2014 | 2015                          | Corresponding 2014 | 2015                        | Corresponding 2014 |
| Sri Lankan Rupee  | 132.90                      | 130.90             | 145.85                        | 180.28             | 200.63                      | 218.64             |
| Indian Rupee      | 61.79                       | 61.72              | 69.15                         | 85.17              | 95.12                       | 103.29             |
| Kenyan Shilling   | 89.81                       | 84.04              | 100.50                        | 117.34             | 138.25                      | 142.31             |
| Bangladesh Taka   | 76.44                       | 76.27              | 85.54                         | 105.25             | 117.68                      | 127.64             |
| Indonesian Rupiah | 12,970.20                   | 11,574.10          | 14,514.00                     | 15,971.00          | 19,965.90                   | 19,368.70          |
| Malawi Kwacha     | 440.96                      | 419.37             | 493.44                        | 578.68             | 678.80                      | 701.80             |
| Vietnam Dong      | 21,075.00                   | 20,798.00          | 23,583.60                     | 28,699.00          | 32,442.20                   | 34,804.40          |

**SRI LANKA RUPEE AGAINST US DOLLAR – TIME PERIOD: 26/02/2015 to 03/03/2015**

|            |        |            |        |
|------------|--------|------------|--------|
| 26/02/2015 | 132.90 | 02/03/2015 | 132.90 |
| 27/02/2015 | 132.90 | 03/03/2015 | 132.90 |

Please refer Page No.2 & 12 for more details


(Source: [www.oanda.com](http://www.oanda.com) / CBSL)

CEYLON TEA BROKERS PLC – SALE NO.9 OF 02<sup>ND</sup> / 03<sup>RD</sup> MARCH 2015

**QUANTITY SOLD DURING THE PERIOD**

(23rd February 2015 to 28th February 2015)

|                                | 2015         |               | 2014         |               |
|--------------------------------|--------------|---------------|--------------|---------------|
|                                | WEEKLY       | TODATE        | WEEKLY       | TODATE        |
| PRIVATE SALES                  | 48,235.00    | 338,863.00    | 65,876.00    | 554,408.00    |
| PUBLIC AUCTION                 | 5,781,077.00 | 46,681,327.50 | 6,543,921.50 | 51,209,645.50 |
| FORWARD CONTRACTS              | 19,800.00    | 96,190.00     | 18,430.00    | 89,530.00     |
| DIRECT SALES                   | 30,350.00    | 275,363.94    | 53,509.00    | 370,690.80    |
| TOTAL                          | 5,879,462.00 | 47,391,744.44 | 6,681,736.50 | 52,224,274.30 |
| BMF EXCLUDED FROM PRIVATE SALE | 212,233.00   | 1,741,916.00  | 165,037.00   | 2,330,769.00  |

|   |   |
|---|---|
| <p>Tea- Tech<br/>Column</p>  | <p><b>Bulk teas carefully before packing</b><br/><b>and</b><br/><b>avoid bag to bag variances</b></p> |
|---|---|

.....

## Sri Lanka Tea Production - January 2015

Sri Lanka's Tea Production for the month of January 2015 amounted to 23.26 Mn/Kg, showing a marginal decrease of 0.48 Mn/Kg compared to the same period last year.

Elevation wise analysis shows a slight increase in Low Grown by 0.44Mn/Kg whilst High and Medium Grown were lower by 0.6 Mn/Kg and 0.32 Mn/Kg respectively.

(Please refer page no.12 for more details)

|   |
|---|
| <p>CEYLON TEA BROKERS PLC -SALE NO. 9 OF 02<sup>ND</sup> / 03<sup>RD</sup> MARCH 2015</p> |
|---|

## ORDER OF SALE – SOLD THIS WEEK

|           |                                       |                                       |
|-----------|---------------------------------------|---------------------------------------|
| EX-ESTATE | H&M/OFF GRADE/DUST                    | LEAFY/TIPPY/PREM & BOP1A              |
| ASIA      | Asia Siyaka Commodities PLC           | Forbes & Walker Tea Brokers (Pvt) Ltd |
| F&W       | John Keells PLC                       | <b>Ceylon Tea Brokers PLC</b>         |
| EBL       | Eastern Brokers Ltd                   | Asia Siyaka Commodities PLC           |
| MBL       | <b>Ceylon Tea Brokers PLC</b>         | John Keells PLC                       |
| LCBL      | Lanka Commodity Brokers Ltd           | Eastern Brokers Ltd                   |
| JKL       | Bartleet Produce Marketing (Pvt) Ltd  | Lanka Commodity Brokers Ltd           |
| BART      | Forbes & Walker Tea Brokers (Pvt) Ltd | Mercantie Produce Brokers(Pvt) Ltd    |
| CTB       | Mercantile Produce Brokers (Pvt) Ltd  | Bartleet Produce Marketing (Pvt) Ltd  |

| Catalogue          | LOTS          | QTY (KGS)        |
|--------------------|---------------|------------------|
| Ex- Estate         | 934           | 1,086,945        |
| High & Medium      | 1,267         | 700,939          |
| Low Grown (L)      | 3,916         | 1,861,431        |
| Low Grown (S)      | 2,683         | 1,667,785        |
| Off Grades / BOP1A | 2,327         | 1,282,727        |
| Dusts              | 578           | 539,922          |
| Premium Flowery    | 415           | 111,494          |
| <b>TOTAL</b>       | <b>12,120</b> | <b>7,251,243</b> |

## HIGH GROWN TEAS

Less demand mostly at easier rates.

**BOP** Best Western's- a few select invoices appreciated irregularly following airmail inquiry, whilst others declined by upto Rs. 20 per kg. Teas in the below best category depreciated by Rs. 10 per kg, whilst the plainer sorts were lower by Rs. 10-20 per kg. Nuwara Eliyas gained by Rs. 20 per kg and more. Uva/Udapussellawas were Rs. 10-20 per kg lower.

**BOPF** Best Western's a few select invoices where quality maintained sold around last week's levels following special inquiry, others declined by upto Rs. 20 per kg. In the below best category brighter sorts depreciated by Rs. 20 per kg, whilst others together with plainer sorts were Rs. 10-20 per kg lower. Nuwara Eliyas- a few select invoices were substantially dearer following airmail inquiry, others were barely steady. Uva/Udapussellawas were Rs. 10-15 per kg lower.

## MEDIUM GROWN TEAS

**BOP** Rs. 5-10 per kg lower.

**BOPF** Rs. 10 – 15 per kg lower

**OP/OPA** Firm to last

**FBOP/FF1** Sold around last week's levels. FF1s firm

**PEK/PEK1** Firm

## C T C

**High Grown** BP1s- Rs. 10 per kg lower. PF1s- Better sorts were Rs.5 – 10 per kg lower. Poorer sorts were difficult of sale.

**Medium Grown** BP1s – Rs. 10 per kg lower. PF1s – Irregular and Rs. 5-10 per kg lower.

**Low Grown** BP1s- Rs. 30-40 per kg lower. PF1- High priced teas were firm. Others irregular.

CEYLON TEA BROKERS PLC –SALE NO. 9 OF 02<sup>ND</sup> / 03<sup>RD</sup> MARCH 2015

| QUOTATIONS – High Grown       | BOP |     | BOPF |     |
|-------------------------------|-----|-----|------|-----|
| BEST WESTERNS                 | 460 | 720 | 460  | 550 |
| BELOW BEST WESTERNS           | 425 | 450 | 430  | 450 |
| PLAINER WESTERNS              | 400 | 420 | 375  | 425 |
| NUWARA ELIYAS                 | 640 | 700 | 470  | 580 |
| UDAPUSSELLAWAS                | 365 | 390 | 365  | 370 |
| BEST UVAS                     | 400 | 440 | 410  | 430 |
| OTHER UVAS                    | 525 | 590 | 450  | 460 |
| GOOD MEDIUMS                  | 480 | 500 | 370  | 415 |
| POOR MEDIUMS                  |     |     |      |     |
| QUOTATIONS – Unorthodox (CTC) | PF1 |     | BP1  |     |
| CTC (High & Medium)           | 350 | 425 | 375  | 400 |
| CTC (Low)                     | 340 | 530 | 350  | 420 |

### LOW GROWN

- BOP1**      *Select best along with the others eased.*
- OP1**      *Select best held firm along with the below best*
- OP**      *Select best and the below best eased*
- OPA**      *Select best and the below best eased*
- PEKOE/PEKOE1**      *Held firm*
- FBOP/ FBOP1**      *Select best high priced FBOPs of last week were firm to easier and secondaries too followed a similar trend.*
- BOP**      *Select best high priced teas were marginally lower. Best and Below best too were lower.*
- BOPF**      *Firm on last week's levels*
- FBOPF**      *Teas with tippler appearance gained on last*
- FBOPF1**      *High priced teas held firm. Best & below best marginally lower.*

| QUOTATION        | SELECT BEST | BEST      | BELOW BEST | OTHERS    |
|------------------|-------------|-----------|------------|-----------|
| FBOP1            | 430         | 390 – 420 | 345 – 380  | 310 – 340 |
| FBOP             | 520 – 580   | 450 – 510 | 380 – 430  | 330 – 370 |
| BOP              | 520         | 470 – 500 | 380 – 410  | 300 – 320 |
| BOPF             | -           | 390 – 440 | 325 – 380  | 275 – 310 |
| FBOPF1           | 510 – 550   | 450 – 500 | 380 – 430  | 340 – 380 |
| FBOPF            | 580 – 590   | 440 – 500 | 380 – 440  | 330 – 380 |
| FBOPFSP/FBOPFSP1 | 950 – 2200  | 700 – 900 | 600 – 660  | -         |
| BOP1             | 460 – 570   | 430 – 460 | 400 – 430  | 320 – 350 |
| OP1              | 530 – 740   | 480 – 500 | 450 – 470  | 310 – 350 |
| OP               | 440 – 560   | 410 – 435 | 310 – 410  | 320 – 360 |
| OPA              | 440 – 510   | 400 – 430 | 370 – 410  | 320 – 370 |
| PEKOE            | 550 – 650   | 500 – 540 | 410 – 450  | -         |
| PEKOE 1          | 570 – 660   | 500 – 550 | 440 – 470  | -         |

CEYLON TEA BROKERS PLC –SALE NO. 9 OF 02<sup>ND</sup> / 03<sup>RD</sup> MARCH 2015

## OFF GRADES

**FGS/FGS1** : Best liquoring types were firm. Best & below best types gained by Rs.5 -10 per kg.

**BP/BM** : Select best BMs were lower by Rs.10 per kg. Poorer sorts were gained by Rs.10 per kg. BPs allround lower.

**BOP1A** : Select best & Best were lower by Rs.10- 20 per kg. Below best and poorer types gained by Rs.5 -10 per kg.

| QUOTATIONS  | HIGH |     | MEDIUM |     | LOW |     |
|-------------|------|-----|--------|-----|-----|-----|
| BETTER FNGS | 280  | 310 | 275    | 310 | 285 | 330 |
| OTHER FNGS  | 270  | 305 | 270    | 300 | 270 | 305 |
| P.FGS (CTC) | 265  | 310 | 260    | 310 | 280 | 370 |
| BP / BM     | 295  | 380 | 285    | 380 | 305 | 410 |
| BOPIA       | 290  | 340 | 295    | 370 | 305 | 400 |

**DUSTS/DUST1**: Best liquoring types dropped by Rs.10 – 20 per kg whilst below best were firm to irregularly lower. CTC were firm to Rs.10 per kg lower.

| QUOTATIONS           | HIGH |     | MEDIUM |     | LOW |     |
|----------------------|------|-----|--------|-----|-----|-----|
| BETTER PRIMARY DUSTS | 240  | 580 | 350    | 420 | 320 | 490 |
| SECONDARY DUSTS      | 220  | 340 | 205    | 340 | 210 | 320 |
| PDUST (CTC)          | 460  | 450 | 330    | 435 | 350 | 520 |

## TOP PRICES – HIGH AND MEDIUM TEAS

## WESTERN MEDIUM

|                 |              |          |
|-----------------|--------------|----------|
| Imboopittia     | BOP          | 590.00   |
| Craighead       | BOP          | 590.00   |
| Nayapane        | BOP SP       | 640.00   |
| Craighead       | BOPF/BOPFSP  | 490.00   |
| Imboolpittia    | FBOP/FBOP1   | 1,000.00 |
| Craighead       | FBOP/FBOP1   | 1,000.00 |
| Imboolpittia    | BOP1         | 650.00   |
| Imboolpittia    | FBOPF/FBOPF1 | 580.00   |
| Kenilworth      | FBOPF/FBOPF1 | 580.00   |
| Craighead       | FBOPF/FBOPF1 | 580.00   |
| Cooroondoowatte | OP/OPA       | 470.00   |
| Ancoombra       | OP1          | 425.00   |
| Craighead       | PEK/PEK1     | 550.00   |

## UVA MEDIUM

|                |              |        |
|----------------|--------------|--------|
| Demodera 'S'   | BOP          | 520.00 |
| Demodera 'S'   | BOP SP       | 480.00 |
| Demodera 'S'   | BOPF/BOPFSP  | 380.00 |
| Maratenne      | BOP1         | 560.00 |
| Shawlands      | FBOP/FBOP1   | 650.00 |
| Demodera 'S'   | FBOPF/FBOPF1 | 550.00 |
| Maratenne      | FBOPF/FBOPF1 | 550.00 |
| Adawatte       | OP/OPA       | 480.00 |
| Telbedde       | OP1          | 435.00 |
| Halpewatte Uva | PEK/PEK1     | 540.00 |
| Wewesse        | PEK/PEK1     | 540.00 |
| Demodera 'S'   | PEK/PEK1     | 540.00 |

## WESTERN HIGH

|               |              |        |
|---------------|--------------|--------|
| Somerset      | BOP          | 720.00 |
| Nadoo Totem   | BOP SP       | 500.00 |
| Brunswick     | BOPF/BOPFSP  | 550.00 |
| Inverness     | BOP1         | 550.00 |
| Theresia      | FBOP/FBOP1   | 850.00 |
| Diyagama West | FBOPF/FBOPF1 | 590.00 |
| Inverness     | FBOPF/FBOPF1 | 590.00 |
| Inverness     | OP/OPA       | 445.00 |
| St Clair      | OP1          | 310.00 |
| Diyagama West | PEK/PEK1     | 620.00 |

## UVA HIGH

|               |              |        |
|---------------|--------------|--------|
| Kelliebedde   | BOP          | 440.00 |
| Craig         | BOP SP       | 450.00 |
| Poonagalla    | BOP SP       | 450.00 |
| Oodoowerre    | BOP SP       | 450.00 |
| Bandara Eliya | BOPF/BOPFSP  | 430.00 |
| Oodoowerre    | BOP1         | 550.00 |
| Oodoowerre    | FBOP/FBOP1   | 560.00 |
| Oodoowerre    | FBOPF/FBOPF1 | 550.00 |
| Battawatte    | OP/OPA       | 370.00 |
| Uva Highlands | OP1          | 420.00 |
| Spring Valley | PEK/PEK1     | 540.00 |

## UDAPUSSELLAWAS

|             |              |        |
|-------------|--------------|--------|
| Gonapitiya  | BOP          | 425.00 |
| Blairlomond | BOPSP        | 320.00 |
| High Forest | BOPF/BOPFSP  | 470.00 |
| Gampaha     | FBOP/FBOP1   | 440.00 |
| Blairlomond | FBOPF/FBOPF1 | 480.00 |
| Gampaha     | BOP1         | 410.00 |
| Gampaha     | OP/OPA       | 370.00 |
| Gampaha     | PEK/PEK1     | 470.00 |

## NUWARA ELIYAS

|              |             |          |
|--------------|-------------|----------|
| Mahagastotte | BOP         | 700.00   |
| Lovers Leap  | BOPF/BOPFSP | 580.00   |
| Lovers Leap  | FBOP/FBOP1  | 1,150.00 |
| Court Lodge  | PEK/PEK1    | 920.00   |

**DENOTES – CEYLON TEA BROKERS PLC [ @ ] / ALL TIME RECORD PRICE [ \*\* ] / EQUAL ALL TIME RECORD PRICE [ \* ]**

CEYLON TEA BROKERS PLC –SALE NO. 9 OF 02<sup>ND</sup> / 03<sup>RD</sup> MARCH 2015

## UNORTHODOX TEAS (CTC)

| HIGH GROWN – CTC          | PF 1   | BP1    | BPS    | OF     |
|---------------------------|--------|--------|--------|--------|
| Florence                  | 380.00 | 425.00 |        |        |
| Dunsinane                 |        |        | 370.00 |        |
| <b>MEDIUM GROWN – CTC</b> |        |        |        |        |
| Delta                     | 430.00 |        |        |        |
| New Peacock               |        | 415.00 |        |        |
| Strathdon                 |        | 415.00 |        |        |
| Carolina                  |        |        | 440.00 |        |
| <b>LOW GROWN - CTC</b>    |        |        |        |        |
| Hingalgoda                | 540.00 |        |        |        |
| Ceciliyan                 |        | 430.00 |        |        |
| Suduwelipothahena         |        |        |        | 460.00 |

## TOP PRICES – LOW GROWN TEAS

## LEAFY GRADES

|                    |        |        |
|--------------------|--------|--------|
| Hiniduma 'S.H'     | BOP1   | 570.00 |
| Ceciliyan          | BOP1   | 570.00 |
| Gunawardena        | OP     | 560.00 |
| Sithaka            | OP1    | 740.00 |
| Bogoda Group       | OPA    | 510.00 |
| Nawalakanda Super  | PEKOE  | 650.00 |
| Naptune            | PEKOE  | 650.00 |
| Andaradeniya Super | PEKOE1 | 660.00 |

## TIPPY/SMALL LEAF GRADES

|                       |                |                 |
|-----------------------|----------------|-----------------|
| Hiniduma 'S.H'        | BOP            | 590.00          |
| Kiruwanaganga         | BOP SP         | 670.00          |
| <b>New J.S.P</b>      | <b>BOPF</b>    | <b>570.00 @</b> |
| <b>Alhewana Super</b> | <b>BOPF SP</b> | <b>650.00 @</b> |
| Sithaka               | FBOP           | 720.00          |
| Nilrich               | FBOP1          | 630.00          |
| K.D.U. Super          | FBOPF          | 800.00          |
| <b>Uruwala</b>        | <b>FBOPF1</b>  | <b>650.00 @</b> |

## OFF GRADES

|                |         |        |
|----------------|---------|--------|
| Hingalgoda CTC | PF      | 430.00 |
| Aldora         | BM      | 405.00 |
| Wewesse        | BP      | 400.00 |
| Norwood        | FGS/FGS | 445.00 |
| Aldora         | BOP1A   | 400.00 |
| Black River    | BOP1A   | 400.00 |
| Kandadola      | BOP1A   | 400.00 |
| Morawakkorale  | BOP1A   | 400.00 |

## PREMIUM FLOWERY

|              |                     |                   |
|--------------|---------------------|-------------------|
| Divasland    | FBOPF SP            | 1,350.00          |
| <b>Yalta</b> | <b>FBOPF EX SP</b>  | <b>3,200.00 @</b> |
| <b>Yalta</b> | <b>FBOPF EX SP1</b> | <b>1,550.00 @</b> |
| Wathurawila  | FBOPF EX SP1        | 1,550.00          |

## DUSTS

|                |       |        |
|----------------|-------|--------|
| Mattakelle     | DUST1 | 590.00 |
| Hingalgoda CTC | PDUST | 520.00 |

**DENOTES – CEYLON TEA BROKERS PLC [@] / ALL TIME RECORD PRICE [\*\*] / EQUAL ALL TIME RECORD PRICE [\*]**

CEYLON TEA BROKERS PLC –SALE NO. 9 OF 02<sup>ND</sup> / 03<sup>RD</sup> MARCH 2015

## OTHER ATTRACTIVE PRICES IN OUR CATALOGUE

| LEAFY GRADES                        |        |        | TIPPY/SMALL LEAF GRADES |              |          |
|-------------------------------------|--------|--------|-------------------------|--------------|----------|
| URUWALA                             | BOP1   | 530.00 | BROMBIL                 | BOP          | 570.00   |
| MATUWAGALLA SUPER                   | BOP1   | 520.00 | ALHEWANA SUPER          | BOP          | 530.00   |
| YALTA                               | BOP1   | 520.00 | GANGALAGAMUWA SUPER     | BOP          | 530.00   |
| URUWALA                             | OP1    | 640.00 | DEENSIDE                | BOPSP        | 480.00   |
| LICKRA                              | OP1    | 580.00 | CO-OP TEA               | BOPF         | 380.00   |
| LIONS                               | OP1    | 575.00 | GANGALAGAMUWA SUPER     | BOPFSP       | 340.00   |
| YALTA                               | OP     | 500.00 | LIONS                   | BOPA         | 520.00   |
| SIHARA                              | OP     | 500.00 | YALTA                   | BOPA         | 520.00   |
| LICKRA                              | OP     | 480.00 | LICKRA                  | BOPA         | 520.00   |
| YALTA                               | OPA    | 480.00 | NEW J.S.P               | FBOP         | 640.00   |
| NILGIRI                             | OPA    | 460.00 | NILGIRI                 | FBOP         | 630.00   |
| LIONS                               | OPA    | 450.00 | DEENSIDE                | FBOP1        | 420.00   |
| SIRIMEWANA                          | OPA    | 450.00 | SIHARA                  | FBOPF        | 580.00   |
| A.C.U. SUPER                        | PEKOE  | 630.00 | URUWALA                 | FBOPF1       | 650.00   |
| THUNDOLA ELLA                       | PEKOE  | 575.00 | MULATIAYAN HILLS        | FBOPF1       | 610.00   |
| BROMBIL                             | PEKOE  | 570.00 |                         |              |          |
| RICHILAND                           | PEKOE1 | 610.00 | <b>OFF GRADES</b>       |              |          |
| YALTA                               | PEKOE1 | 610.00 | MIDLANDS                | PF           | 310.00   |
| URUWALA                             | PEKOE1 | 610.00 | INDIGAHAHENA            | PF           | 310.00   |
|                                     |        |        | J.S.P                   | BM           | 400.00   |
|                                     |        |        | NIMLA                   | BP           | 340.00   |
|                                     |        |        | MIDFIELD                | FGS          | 310.00   |
|                                     |        |        | RICHILAND               | BOP1A        | 390.00   |
|                                     |        |        | SIHARA                  | BOP1A        | 385.00   |
| <b>EX -ESTATE/HIGH &amp; MEDIUM</b> |        |        | <b>PREMIUM FLOWERY</b>  |              |          |
| HAUTEVILLE                          | BOP    | 420.00 | GOLDEN GARDEN           | FBOPF EX SP1 | 1,350.00 |
| HAUTEVILLE                          | BOPF   | 410.00 | GOLDEN GARDEN           | FBOPF EX SP  | 1,650.00 |
| WAVERLEY                            | BOPF   | 410.00 | SANIKTO                 | FBOPF EX SP  | 1,260.00 |
| KALUBOWITIYANA                      | PF1    | 470.00 | PANAWENNA               | FBOPF EX SP  | 1,050.00 |
| NEW PEACOCK                         | PF1    | 410.00 | SUWISHKA                | FBOPF SP     | 1,150.00 |
| BOGAHAWATTE                         | PEK1   | 480.00 | GOLDEN GARDEN           | FBOPF SP     | 1,100.00 |
| TORRINGTON                          | FBOP   | 560.00 | HIMARA                  | FBOPF SP     | 1,100.00 |
| BOGAHAWATTE                         | FBOP   | 550.00 | BROMBIL                 | FBOPF SP     | 1,100.00 |
| TORRINGTON                          | FBOPF1 | 530.00 |                         |              |          |
| MAHATENNA                           | FBOPF1 | 500.00 |                         |              |          |
| <b>DUST</b>                         |        |        |                         |              |          |
| HAUTEVILLE                          | DUST1  | 450.00 |                         |              |          |
| WAVERLEY                            | DUST1  | 450.00 |                         |              |          |
| NEW PEACOCK                         | PDUST  | 420.00 |                         |              |          |
| MADULKELLE                          | PDUST  | 420.00 |                         |              |          |

## FUTURE SALES INFORMATION

NEXT SALE NO.10

SALE OF 10<sup>TH</sup> / 11<sup>TH</sup> MARCH 2015

Ex-Estate H/M-OFF GR &amp; DUST LEAFY/TIPPY/PREM &amp; BOP1A Our Selling Time

|            |            |                                       |                                   |           |
|------------|------------|---------------------------------------|-----------------------------------|-----------|
| F&W        | JKL        | <b>Ceylon Tea Brokers PLC</b>         | <b>10<sup>th</sup> March 2015</b> |           |
| ASIA       | EBL        | Asia Siyaka Commodities PLC           | High & Medium                     | 9.15 a.m  |
| BART       | <b>CTB</b> | John Keells PLC                       | Low Grown (Tippy)                 | 8.00 a.m  |
| <b>CTB</b> | LCBL       | Eastern Brokers Ltd                   | Premium Flowery                   | 9.00 a.m  |
| JKL        | BART       | Lanka Commodity Brokers Ltd           | BOP1A                             | 12.10 p.m |
| MBL        | F&W        | Mercantile Produce Brokers (Pvt) Ltd  | Low Grown (Leafy)                 | 8.00 a.m  |
| LCBL       | MBL        | Bartleet Produce Marketing (Pvt) Ltd  | <b>11<sup>th</sup> March 2015</b> |           |
| EBL        | ASIA       | Forbes & Walker Tea Brokers (Pvt) Ltd | Ex-Estate                         | 9.50 a.m  |
|            |            |                                       | Off Grades                        | 9.20 a.m  |
|            |            |                                       | Dusts                             | 2.00 p.m  |

Buyers Prompt :17.03.2015

Sellers Prompt: 18.03.2015

**DENOTES – CEYLON TEA BROKERS PLC [ @ ] / ALL TIME RECORD PRICE [ \*\* ] / EQUAL ALL TIME RECORD PRICE [ \* ]**

CEYLON TEA BROKERS PLC -SALE NO. 9 OF 02<sup>ND</sup> / 03<sup>RD</sup> MARCH 2015

## AWAITING SALE OFFERINGS

|                  | SALE OF – 10 <sup>TH</sup> / 11 <sup>TH</sup> MARCH 2015 |                  | SALE OF – 17 <sup>TH</sup> / 18 <sup>TH</sup> MARCH 2015 |                  |
|------------------|--|------------------|--|------------------|
|                  | LOTS   | QTY(KGS)         | LOTS   | QTY(KGS)         |
| EX- ESTATE       | 1,053  | 1,230,346        | 1,106  | 1,285,263        |
| HIGH AND MEDIUM  | 1,304  | 737,882          | 1,475  | 819,798          |
| LOW GROWN (L)    | 3,879  | 1,848,790        | 3,620  | 1,712,010        |
| LOW GROWN (S)    | 2,545  | 1,585,471        | 2,390  | 1,461,497        |
| OFF GRADES+BOP1A | 2,132  | 1,179,298        | 2,134  | 1,213,204        |
| DUSTS            | 630  | 607,456          | 611  | 606,003          |
| PREMIUM FLOWERY  | 346  | 82,080           | 283  | 66,259           |
| <b>TOTAL</b>     | <b>11,889</b>  | <b>7,271,323</b> | <b>11,619</b>  | <b>7,164,034</b> |
| MAIN SALE        | 20/02/2015   |                  | 27/02/2015   |                  |
| EX ESTATE        | 19/02/2015   |                  | 26/02/2015   |                  |

- Closed ahead of the Schedule.

## CATALOGUE CLOSING DATES

### Sale No. 12 - 24<sup>th</sup> / 25<sup>th</sup> March 2015

Ex-Estate catalogue scheduled to be closed on the 06<sup>th</sup> March, 2015 and Main Sale catalogues scheduled to be closed on the 06<sup>th</sup> March 2015 or earlier.

### Sale No. 13 – 31<sup>st</sup> March/ 01<sup>st</sup> April 2015

Ex-Estate catalogue scheduled to be closed on the 12<sup>th</sup> March, 2015 and Main Sale catalogues scheduled to be closed on the 13<sup>th</sup> March 2015 or earlier.

### Sale No. 14 - 07<sup>th</sup> / 08<sup>th</sup> April 2015

Ex-Estate catalogue scheduled to be closed on the 19<sup>th</sup> March, 2015 and Main Sale catalogues scheduled to be closed on the 20<sup>th</sup> March 2015 or earlier.

## WORLD TEA PRODUCTION (IN MILLION KILOS)

| Country             | Month          | 2013         | 2014         | 2013<br>Todate | 2014<br>Todate | Difference<br>+/- |
|---------------------|----------------|--------------|--------------|----------------|----------------|-------------------|
| <b>Sri Lanka</b>    | <b>January</b> | <b>23.26</b> | <b>23.74</b> | <b>23.26</b>   | <b>23.74</b>   | <b>-0.48</b>      |
| Bangladesh          | December       | 5.3          | 3.8          | 66.3           | 64.5           | -1.8              |
| Kenya               | December       | 41.7         | 45.0         | 432.4          | 445.1          | +12.6             |
| Malawi              | December       | 4.0          | 1.8          | 309.7          | 313.8          | +4.1              |
| North India         | December       | 39.3         | 40.1         | 958.6          | 943.6          | -15.0             |
| South India         | December       | 17.9         | 17.5         | 241.8          | 241.2          | -0.6              |
| Uganda              | November       | 5.7          | 3.3          | 55.6           | 55.3           | -0.2              |
| Indonesia(PTP only) | May            | 5.3          | 5.2          | 24.1           | 24.8           | +0.7              |

*(Source: Africa Tea Brokers/National Brokers Ltd)*

CEYLON TEA BROKERS PLC -SALE NO. 9 OF 02<sup>ND</sup> / 03<sup>RD</sup> MARCH 2015



## ELEVATION WISE – STATISTICS – COLOMBO AUCTION AVERAGES

| Elevation          | WEEK BEFORE LAST | LAST WEEK        | LAST YEAR     |
|--------------------|------------------|------------------|---------------|
|                    | (RS)             | (RS)             | (RS)          |
|                    | Sale- 18.02.2015 | Sale- 25.02.2015 | Corres 2014   |
| Uva High           | 367.03           | 374.10           | 397.34        |
| Western High       | 424.80           | 425.18           | 448.46        |
| CTC High           | 384.63           | 371.22           | 414.87        |
| Total High Grown   | 409.53           | 412.95           | 436.26        |
| Uva Medium         | 384.08           | 379.95           | 419.60        |
| Western Medium     | 400.12           | 403.52           | 409.53        |
| CTC Medium         | 394.90           | 400.63           | 411.77        |
| Total Medium Grown | 394.88           | 394.93           | 412.74        |
| Orthodox Low       | 421.89           | 428.08           | 505.53        |
| CTC Low            | 427.73           | 423.60           | 466.85        |
| Total Low Grown    | 422.05           | 427.95           | 504.44        |
| <b>TOTAL</b>       | <b>415.83</b>    | <b>420.43</b>    | <b>476.76</b> |

| Elevation   | WEEK BEFORE LAST  | LAST WEEK        | LAST YEAR     |
|---|-------------------|------------------|---------------|
|   | (\$)              | (\$)             | (RS)          |
|   | Sale - 18.02.2015 | Sale- 25.02.2015 | Corres 2014   |
| Uva High  | 2.76              | 2.81             | 3.03          |
| Western High  | 3.20              | 3.20             | 3.42          |
| CTC High  | 2.90              | 2.79             | 3.17          |
| Total High Grown  | 3.08              | 3.11             | 3.33          |
| Uva Medium  | 2.89              | 2.86             | 3.20          |
| Western Medium  | 3.01              | 3.04             | 3.13          |
| CTC Medium  | 2.97              | 3.01             | 3.14          |
| Total Medium Grown  | 2.97              | 2.97             | 3.15          |
| Orthodox Low  | 3.18              | 3.22             | 3.86          |
| CTC Low   | 3.22              | 3.19             | 3.56          |
| Total Low Grown   | 3.18              | 3.22             | 3.85          |
| <b>TOTAL</b>  | <b>3.13</b>       | <b>3.16</b>      | <b>3.64</b>   |
| <b>Weekly Sale Averages – 1 USD= Rs.<br/>(Daily weighted average)</b> | <b>132.80</b>     | <b>132.90</b>    | <b>131.02</b> |

| Elevation          | LAST YEAR     | TODATE        | LAST YEAR    | TODATE       |
|--------------------|---------------|---------------|--------------|--------------|
|                    | 2014<br>(RS)  | 2015<br>(RS)  | 2014<br>(\$) | 2015<br>(\$) |
| Uva High           | 416.99        | 361.88        | 3.19         | 2.75         |
| Western High       | 454.09        | 418.19        | 3.47         | 3.18         |
| CTC High           | 423.82        | 368.24        | 3.24         | 2.80         |
| Total High Grown   | 445.03        | 403.73        | 3.40         | 3.07         |
| Uva Medium         | 446.63        | 372.94        | 3.41         | 2.83         |
| Western Medium     | 428.05        | 385.32        | 3.27         | 2.93         |
| CTC Medium         | 423.75        | 385.78        | 3.24         | 2.93         |
| Total Medium Grown | 434.44        | 381.01        | 3.32         | 2.90         |
| Orthodox Low       | 526.72        | 433.37        | 4.03         | 3.29         |
| CTC Low            | 501.68        | 426.80        | 3.83         | 3.24         |
| Total Low Grown    | 525.95        | 433.18        | 4.02         | 3.29         |
| <b>TOTAL</b>       | <b>495.06</b> | <b>420.31</b> | <b>3.78</b>  | <b>3.20</b>  |

\* Cumulative Sale Averages – 1 USD= Rs. (Monthly Weighted Average)

130.82      131.55

(Source: MSL / CBSL)

|  |
|--|
| <b>CEYLON TEA BROKERS PLC – SALE NO. 9 OF 02<sup>ND</sup> / 03<sup>RD</sup> MARCH 2015</b> |
|--|

**MOMBASA AUCTION**

Due to the advancement of the sale we have not received the above market upto the time of compiling this publication

AUCTION AVERAGE PRICES (in US\$ per kg)

**SALE 08 HELD ON  
23 & 24/02/2015**

**SALE 08 HELD ON  
24 & 25/02/2014**

| COUNTRY      | PRIMARY     | SECONDARY   | TOTAL       | PRIMARY     | SECONDARY   | TOTAL       |
|--------------|-------------|-------------|-------------|-------------|-------------|-------------|
| Kenya        | 2.68        | 1.11        | 2.56        | 2.37        | 1.74        | 2.32        |
| Uganda       | 1.46        | 0.85        | 1.26        | 1.84        | 1.63        | 1.76        |
| Rwanda       | 2.82        | 1.86        | 2.70        | 2.53        | 2.17        | 2.48        |
| Burundi      | 2.65        | 1.83        | 2.59        | 2.25        | 1.81        | 2.20        |
| Zambia       | -           | -           | -           | -           | -           | -           |
| Tanzania     | 1.06        | 0.76        | 0.86        | 1.50        | 1.63        | 1.55        |
| D R of Congo | 1.75        | -           | 1.75        | 1.92        | 1.66        | 1.86        |
| Mozambique   | 1.30        | -           | 1.30        | 1.84        | 1.57        | 1.71        |
| Madagascar   | -           | -           | -           | 1.65        | 1.54        | 1.58        |
| Malawi       | -           | -           | -           | -           | -           | -           |
| Zimbabwe     | -           | -           | -           | -           | -           | -           |
| Ethiopia     | -           | -           | -           | -           | -           | -           |
| <b>Total</b> | <b>2.56</b> | <b>1.05</b> | <b>2.38</b> | <b>2.32</b> | <b>1.71</b> | <b>2.24</b> |

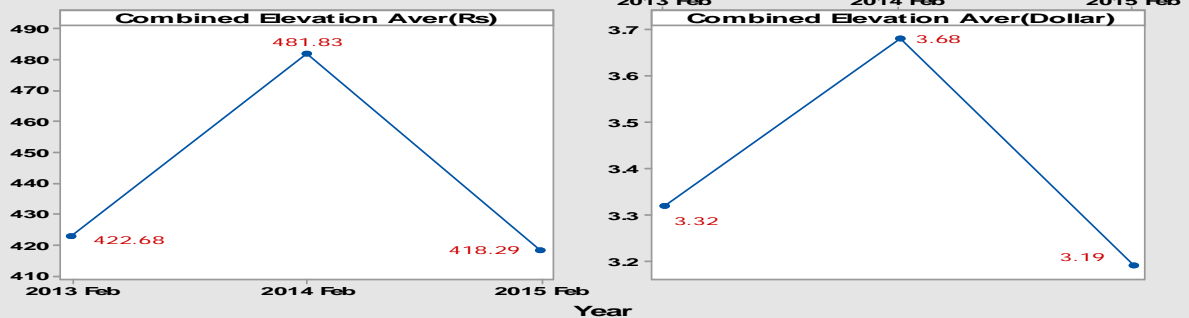
**TO DATE: 2015**

**TO DATE: 2014**

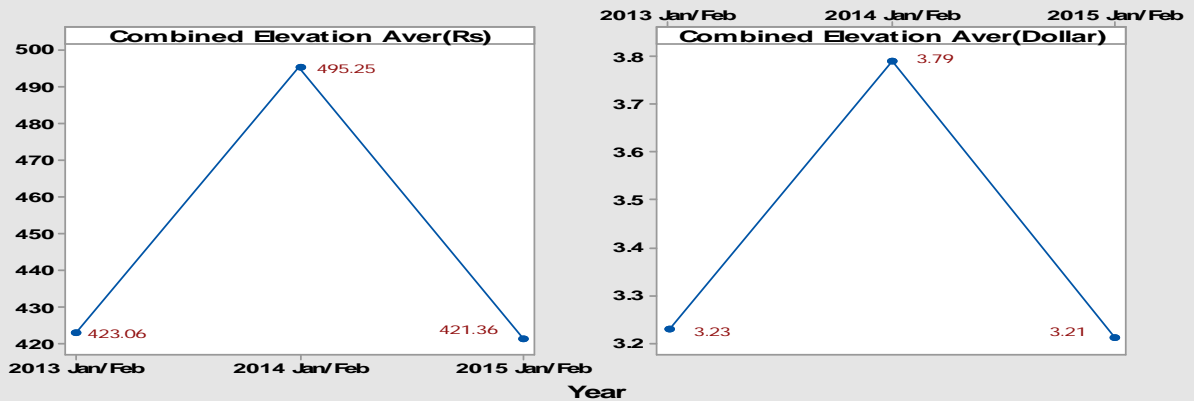
|              |             |             |             |             |             |             |
|--------------|-------------|-------------|-------------|-------------|-------------|-------------|
| Kenya        | 2.47        | 1.09        | 2.37        | 2.58        | 1.83        | 2.51        |
| Uganda       | 1.40        | 0.81        | 1.21        | 1.93        | 1.73        | 1.86        |
| Rwanda       | 2.56        | 1.76        | 2.44        | 2.71        | 2.21        | 2.64        |
| Burundi      | 2.50        | 1.77        | 2.43        | 2.51        | 2.03        | 2.44        |
| Zambia       | -           | -           | -           | -           | -           | -           |
| Tanzania     | 1.13        | 0.74        | 0.98        | 1.62        | 1.67        | 1.65        |
| D R of Congo | 1.76        | 0.55        | 1.35        | 1.90        | 1.65        | 1.82        |
| Mozambique   | 1.10        | 0.52        | 0.61        | 1.85        | 1.60        | 1.75        |
| Madagascar   | -           | -           | -           | 1.71        | 1.63        | 1.68        |
| Malawi       | -           | 0.64        | 0.64        | 1.74        | 1.68        | 1.73        |
| Zimbabwe     | -           | -           | -           | -           | -           | -           |
| Ethiopia     | -           | -           | -           | -           | -           | -           |
| <b>Total</b> | <b>2.35</b> | <b>1.02</b> | <b>2.19</b> | <b>2.48</b> | <b>1.80</b> | <b>2.39</b> |

Source – Africa Tea Brokers Ltd

Comparison of combined elevational averages for the month of Feb 2013, 2014, 2015 in Rs and US\$



Comparison of combined cumulative elevational averages for the months of Jan/Feb 2013, 2014, 2015 in Rs and US\$



CEYLON TEA BROKERS PLC -SALE NO. 9 OF 02<sup>ND</sup> / 03<sup>RD</sup> MARCH 2015

BANGLADESH /GUWAHATI & JAKARTA AUCTIONS

**CTC LEAF:** Met with a strong but selective demand.

**BROKENS:** A handful of clean Brokens met with a strong demand at generally firm rates and these could be quoted between Tk.195/- and Tk.210/- but the other varieties particularly the end of season types were mostly neglected and were discounted where sold. There were also fair withdrawals in this category.

**FANNINGS:** The clean Fannings on offer met with a strong demand and were dearer following competition of ten appreciating by Tk.5/-. These could be quoted between n Tk.205/- and Tk.225/-. The remainder met with fair demand but often eased slightly. Poor end of season types were mostly neglected without bids.

**CTC DUST:** met with a fairly good demand with prices closely following quality. A few good liquoring varieties were firm to slightly dearer following competition whilst others sold at around last levels in line with quality. End of season types were mostly unsold. Blenders lent good support with fairly good interest from the Loose tea buyers.

**COMMENTS:** A larger weight of end of season types were on offer which met with a selective demand. The clean varieties were strongly competed for and mostly sold at dearer rates. All others were easier following quality. End of season types were very difficult of sale with some withdrawals. Good liquoring Dusts were mostly a dearer market.

**KOLKATA AUCTION SALE OF 3<sup>RD</sup> MARCH, 2015 (Preliminary)**

**MARKET :** Fair demand All teas on offer selling at irregularly easier levels following a seasonal decline in quality. Western India/Exporters operating Tata Tea/HUL silent Regional Packeteers operating

**GUWAHATI AUCTION SALE OF 3<sup>RD</sup> MARCH, 2015 (Preliminary)**

**MARKET :** Market opened to fair demand. Selected cleaner leaf varieties selling at barely steady rates. Others irregularly easier with browner descriptions being discounted and witnessing some withdrawals. TGBL and HUL absent. Internal buyers mainstay in the market with selective enquiry from Western India.

Source: National Brokers Ltd

**“Await the Most Important Date for the Global Tea Industry”**

CEYLON TEA EXPO 2015 6 – 8 November 2015  
BMICH, Colombo Sri Lanka

For the first time ever get to know **CEYLON TEA** first hand

- The place to meet over 300 leading tea exporters and garden mark owners of Ceylon Tea
- In addition opportunities to visit the tea gardens and the factories

**BOOK THE DATES AND REGISTER EARLY**

[www.pureceylonea.com](http://www.pureceylonea.com)

Sri Lanka Tea Board, 574,Galle Road, Colombo 3, Sri Lanka/Tel: +94-11-2587814/Fax:+94-11-2587341  
E- Mail: [promotion@pureceylontea.com](mailto:promotion@pureceylontea.com)/Web: [www.pureceylontea.com](http://www.pureceylontea.com)

CEYLON TEA BROKERS PLC –SALE NO. 9 OF 02<sup>ND</sup> / 03<sup>RD</sup> MARCH 2015

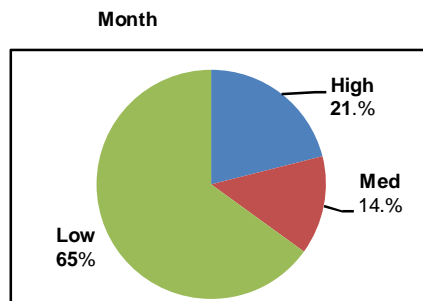
## TEA PRODUCTION STATISTICS - JANUARY 2015

We give below production figures for the month of January 2015, together with the corresponding figures of 2014 (in Kgs)

|  | January 2015         | January 2014         | DIFFERENT FROM LAST<br>YEAR +/-<br>MONTH |
|--|----------------------|----------------------|--|
| <b><u>ORTHODOX</u></b>                   |                      |                      |  |
| High Grown                               | 4,560,211.00         | 5,179,225.10         | (619,014.10)                             |
| Medium Grown                             | 2,400,483.00         | 2,542,902.00         | (142,419.00)                             |
| Low Grown                                | 14,460,676.00        | 14,040,679.50        | 419,996.50                               |
| <b>Total</b>                             | <b>21,421,370.00</b> | <b>21,762,806.60</b> | <b>(341,436.60)</b>                      |
| <b><u>CTC</u></b>                        |                      |                      |  |
| High Grown                               | 288,866.00           | 264,643.50           | 24,222.50                                |
| Medium Grown                             | 556,762.00           | 792,269.00           | (235,507.00)                             |
| Low Grown                                | 750,835.00           | 697,442.00           | 53,393.00                                |
| <b>Total</b>                             | <b>1,596,463.00</b>  | <b>1,754,354.50</b>  | <b>(157,891.50)</b>                      |
| <b><u>TOTAL BLACK TEA PRODUCTION</u></b> |                      |                      |  |
| High Grown                               | 4,849,077.00         | 5,443,868.60         | (594,791.60)                             |
| Medium Grown                             | 2,957,245.00         | 3,335,171.00         | (377,926.00)                             |
| Low Grown                                | 15,211,511.00        | 14,738,121.50        | 473,389.50                               |
| <b>Total</b>                             | <b>23,017,833.00</b> | <b>23,517,161.10</b> | <b>(499,328.10)</b>                      |
| <b><u>GREEN TEA</u></b>                  |                      |                      |  |
| High Grown                               | 64,243.00            | 72,714.50            | (8,471.50)                               |
| Medium Grown                             | 178,829.00           | 119,746.85           | 59,082.15                                |
| Low Grown                                | 38.00                | 31,440.00            | (31,402.00)                              |
| <b>Total</b>                             | <b>243,110.00</b>    | <b>223,901.35</b>    | <b>19,208.65</b>                         |
| <b><u>TOTAL TEA PRODUCTION</u></b>       |                      |                      |  |
| High Grown                               | 4,913,320.00         | 5,516,583.10         | (603,263.10)                             |
| Medium Grown                             | 3,136,074.00         | 3,454,917.85         | (318,843.85)                             |
| Low Grown                                | 15,211,549.00        | 14,769,561.50        | 441,987.50                               |
| <b>Total</b>                             | <b>23,260,943.00</b> | <b>23,741,062.45</b> | <b>(480,119.45)</b>                      |

### ANALYSIS OF TEA PRODUCTION %

|              | Month         |
|--------------|---------------|
| High Grown   | 21.00         |
| Medium Grown | 14.00         |
| Low Grown    | 65.00         |
| <b>Total</b> | <b>100.00</b> |



### CTC PRODUCTION AS A PERCENTAGE OF BLACK TEA PRODUCTION

|       |      |
|-------|------|
| Month | 7.00 |
|-------|------|

Source: Sri Lanka Tea Board

### SRI LANKA TEA SALE AVERAGES

#### Combined Averages

| ELEVATION                 | FEBRUARY      |               |                |                | JANUARY - FEBRUARY |               |                |                |
|---------------------------|---------------|---------------|----------------|----------------|--------------------|---------------|----------------|----------------|
|                           | 2015          | 2014          | Variation      | Variation %    | 2015               | 2014          | Variation      | Variation %    |
| UVA HIGH                  | 371.29        | 405.75        | (34.46)        | (8.49)         | 367.91             | 418.67        | (50.76)        | (12.12)        |
| WESTERN HIGH              | 426.46        | 453.07        | (26.61)        | (5.87)         | 420.48             | 455.93        | (35.45)        | (7.78)         |
| <b>TOTAL HIGH GROWN</b>   | <b>412.50</b> | <b>441.12</b> | <b>(28.62)</b> | <b>(6.49)</b>  | <b>406.67</b>      | <b>446.65</b> | <b>(39.98)</b> | <b>(8.95)</b>  |
| UVA MEDIUM                | 375.45        | 423.23        | (47.78)        | (11.29)        | 373.56             | 447.38        | (73.82)        | (16.50)        |
| WESTERN MEDIUM            | 397.91        | 419.05        | (21.14)        | (5.04)         | 389.25             | 430.64        | (41.39)        | (9.61)         |
| <b>TOTAL MEDIUM GROWN</b> | <b>390.50</b> | <b>420.43</b> | <b>(29.93)</b> | <b>(7.12)</b>  | <b>383.93</b>      | <b>436.20</b> | <b>(52.27)</b> | <b>(11.98)</b> |
| <b>LOW GROWN</b>          | <b>425.58</b> | <b>510.37</b> | <b>(84.79)</b> | <b>(16.61)</b> | <b>433.63</b>      | <b>526.31</b> | <b>(92.68)</b> | <b>(17.61)</b> |
| <b>TOTAL</b>              | <b>418.29</b> | <b>481.83</b> | <b>(63.54)</b> | <b>(13.19)</b> | <b>421.36</b>      | <b>495.25</b> | <b>(73.89)</b> | <b>(14.92)</b> |

#### CTC Averages

| ELEVATION        | FEBRUARY      |               |                |               | JANUARY - FEBRUARY |               |                |                |
|------------------|---------------|---------------|----------------|---------------|--------------------|---------------|----------------|----------------|
|                  | 2015          | 2014          | Variation      | Variation %   | 2015               | 2014          | Variation      | Variation %    |
| CTC HIGH         | 372.56        | 412.64        | (40.08)        | (9.71)        | 368.42             | 423.88        | (55.46)        | (13.08)        |
| CTC MEDIUM       | 389.72        | 417.58        | (27.86)        | (6.67)        | 385.90             | 423.92        | (38.02)        | (8.97)         |
| CTC LOW          | 428.40        | 488.62        | (60.22)        | (12.32)       | 426.83             | 501.70        | (74.87)        | (14.92)        |
| <b>CTC TOTAL</b> | <b>404.48</b> | <b>446.69</b> | <b>(42.21)</b> | <b>(9.45)</b> | <b>401.73</b>      | <b>458.96</b> | <b>(57.23)</b> | <b>(12.47)</b> |

#### Orthodox Averages

| ELEVATION                 | FEBRUARY      |               |                |                | JANUARY - FEBRUARY |               |                |                |
|---------------------------|---------------|---------------|----------------|----------------|--------------------|---------------|----------------|----------------|
|                           | 2015          | 2014          | Variation      | Variation %    | 2015               | 2014          | Variation      | Variation %    |
| UVA HIGH                  | 373.19        | 406.22        | (33.03)        | (8.13)         | 369.79             | 418.29        | (48.50)        | (11.59)        |
| WESTERN HIGH              | 428.58        | 454.57        | (25.99)        | (5.72)         | 422.06             | 457.37        | (35.31)        | (7.72)         |
| <b>TOTAL HIGH GROWN</b>   | <b>414.59</b> | <b>442.49</b> | <b>(27.90)</b> | <b>(6.31)</b>  | <b>408.44</b>      | <b>447.74</b> | <b>(39.30)</b> | <b>(8.78)</b>  |
| UVA MEDIUM                | 376.78        | 423.16        | (46.38)        | (10.96)        | 374.49             | 447.33        | (72.84)        | (16.28)        |
| WESTERN MEDIUM            | 397.91        | 419.32        | (21.41)        | (5.11)         | 388.89             | 431.70        | (42.81)        | (9.92)         |
| <b>TOTAL MEDIUM GROWN</b> | <b>390.57</b> | <b>420.72</b> | <b>(30.15)</b> | <b>(7.17)</b>  | <b>383.75</b>      | <b>437.40</b> | <b>(53.65)</b> | <b>(12.27)</b> |
| <b>LOW GROWN</b>          | <b>425.50</b> | <b>510.99</b> | <b>(85.49)</b> | <b>(16.73)</b> | <b>433.84</b>      | <b>527.08</b> | <b>(93.24)</b> | <b>(17.69)</b> |
| <b>TOTAL</b>              | <b>418.88</b> | <b>483.35</b> | <b>(64.47)</b> | <b>(13.34)</b> | <b>422.18</b>      | <b>496.88</b> | <b>(74.70)</b> | <b>(15.03)</b> |

Source : MSL

CEYLON TEA BROKERS PLC -SALE NO. 9 OF 02<sup>ND</sup> / 03<sup>RD</sup> MARCH 2015