

CEYLON TEA BROKERS PLC

Tea Market Report



Sale No.20 – Sale of 20th/ 21st May 2013

No 43, Jawatta Road, Colombo 5.

Tel : 011-4607777 Fax: 011-4607788

Email: general@ceylontebrokers.com: Web: www.ceylontebrokers.com

COMMENTS

This week a total quantity of 8.0 m kgs were offered at the auction. Ex-estate consisted approximately 1.6 m kgs. There was less demand for the Low Grown orthodox teas as well as the Ex estates.

Best western BOPs declined Rs. 10 per kg whilst Nuwara Eliyas and Uva/ Udupussellawas declined by Rs. 10 – 15 per kg.

Below best and plainer western BOPs eased Rs. 15 – 20 per kg and more particularly as the sale progressed. Nuwara Eliya declined sharply. Uva/ Udupussellawas eased Rs. 5 – 10 per kg.

High, Medium and Low Grown BP1s sold irregularly easier whilst the corresponding PF1s declined by Rs. 10 – 15 per kg in all elevations.

Medium Grown Orthodox varieties sold lower to last week's levels.

Low Growns consisted approximately 3.9 m kgs in the Leafy & Tippy catalogues. Select best BOP1s were barely steady. Best OP1s sold fully firm. Select best together with below best OP/OPAs eased Rs. 5 – 10 per kg. Better PEKOE /PEKOE1s sold firm. Below best sorts sold irregular.

In the small leaf tippy catalogues select best FBOPs maintained. Others together with below best eased Rs. 10 – 15 per kg. Well made tippy teas were firm to dearer. Cleaner teas in the below best sold firm. Well made FF1s sold firm. Below best teas eased Rs. 10 – 15 per kg. There was good demand coming in from Iran, Russia and Syria.

Last week, Due to turbulent weather conditions, Western region experienced heavy showers in the beginning of the week. Extensive damage to roads and buildings was caused in the Hatton/ Dickoya/ Kotagala subdistricts. Few factories in the Dickoya area were affected by flood waters. Bogawantalawa and Agarapatana agro-climatic Planting districts experienced dull weather conditions and scattered showers. Nuwara Eliya and Udupussellawas region experienced bright mornings and occasional evening showers throughout the week. Uva region experienced bright weather conditions in the beginning of the week. Dull weather and scattered showers were reported towards the latter part of the week. Low Growns Kahawatte agro-climatic Planting districts experienced bright weather throughout the week, whilst other regional agro-climatic Planting districts experienced bright mornings and scattered showers.

Crop intake for Udupussellawa region increased, whilst Westerns, Nuwara Eliya, Uva and Low Growns maintained.

Sri Lanka Tea Production for the month of April 2013 stood at 33.6 m kgs (the highest ever for the month of April 2013) vis-à-vis 30.0 m kgs (+3.5mkg) in 2012. Cumulative to date stood at 115.0 m kgs as against 105.0 m kgs in 2012 (+10.0 m kgs). The highest production increase for the month of April YOY was recorded by Low Growns which stood at 18.7 m kgs (+1.7 m kgs) when compared to 2012 same period, followed by High Growns which stood at 8.6 m kgs (+1.3 m kgs). Medium Growns recorded 6.2 m kgs (+0.46 m kgs).

Sri Lanka Tea Exports – The Total Tea exports for the month of April 2013 stood at 21.8 m kgs vis-à-vis 20.53 m kgs in 2012 (+1.27 m kgs). Cumulative figure upto April 2013 stood at 92.8 m kgs as against 96.42 m kgs in 2012 (-3.62 m kgs).

Country wise analysis of exports shows that CIS including Russia continues to be the largest export destination of Sri Lankan teas followed by Iran, Syria and Turkey.

Currency Board – As at 21st May

	United States Dollars (USD)		European Community Euro (EUR)		United Kingdom Pounds (GBP)	
	2013	Corresponding 2012	2013	Corresponding 2012	2013	Corresponding 2012
Sri Lankan Rupee	126.15	129.44	162.16	165.21	191.82	204.73
Indian Rupee	54.91	54.63	70.59	69.72	83.50	86.40
Kenyan Shilling	82.31	83.01	105.80	105.95	125.15	131.31
Bangladesh Taka	76.42	79.92	98.23	102.00	116.19	126.41
Indonesian Rupiah	9,699.32	9,199.63	12,468.00	11,742.00	14,748.30	14,551.50
Malawi Kwacha	353.05	246.61	453.83	314.76	536.83	390.08
Vietnam Dong	20,799.50	20,386.00	26,736.70	26,019.90	31,626.70	32,245.60

SRI LANKA RUPEE AGAINST US DOLLAR – TIME PERIOD : 16/05/2013 to 21/05/2013

16/05/2013	126.07	20/05/2013	126.13
17/05/2013	125.66	21/05/2013	126.15

Please see Page No2 &12 onward, for any Special Comments, Articles & Notices

(Source: www.oanda.com)

CEYLON TEA BROKERS PLC – SALE NO.20 OF 20TH / 21ST MAY 2013

QUANTITY SOLD DURING THE PERIOD
(13th May to 18th May 2013)

	2013		2012	
	WEEKLY	TODATE	WEEKLY	TODATE
PRIVATE SALES	61,278.20	1,287,777.16	98,813.00	1,528,247.00
PUBLIC AUCTION	7,658,592.00	127,132,691.00	7,351,651.00	122,929,343.50
FORWARD CONTRACTS	19,570.00	304,950.00	NIL	NIL
DIRECT SALES	9,874.00	598,947.20	32,911.00	680,650.65
TOTAL	7,749,314.20	129,324,365.36	7,483,375.00	125,138,241.15
BMF EXCLUDED FROM PRIVATE SALE	59,140.00	4,385,583.00	370,666.00	4,174,591.00

HOLIDAY NOTICE

Ceylon Tea Brokers PLC : Head Office, will be closed for business on the following days :-

23 rd May, 2013 (Thursday)	-	Additional Half holiday on account of day following Vesak Full Moon Poya Day falling on a Saturday
24 th May, 2013 (Friday)	-	Vesak Full Moon Poya Day
25 th May, 2013 (Saturday)	-	Day following Vesak Full Moon Poya Day

Ceylon Tea Brokers PLC : Sampling Department and Warehouses will be closed for business on the following days:

24 th May, 2013 (Friday)	-	Vesak Full Moon Poya Day
25 th May, 2013 (Saturday)	-	Day following Vesak Full Moon Poya Day

Sri Lanka Tea Production – April 2013

Sri Lanka Tea Production for the month of April 2013 **recorded the highest todate** 33.60 Mn/Kg showing an increase of 3.54 Mn/Kg compared to the corresponding period last year. High, Medium and Low Growns have shown a growth of 1.33 Mn/Kg, 0.46 Mn/Kg and 1.75 Mn /Kg respectively when compared to the same period of last year.

Cumulative production for the period January to April 2013 amounted to 115.04 Mn/Kg as against 104.98 Mn/Kg in the corresponding period last year, showing a significant increase of 10.06 Mn/Kg.

Elevation wise analysis shows that cumulative production for High & Medium growns recorded an increase of 3.50 Mn/Kg and 1.13 Mn/Kg respectively whilst Low Grown production has recorded a gain of 5.42 Mn/Kg when compared to the same period last year.

(Please refer page No.12 for more detail)

Sri Lanka Tea Exports – April 2013

Total quantity of tea exported for the month of April 2013 including Re-Exports with imported Tea amounted to 21.83 Mn/kg, showing a marginal gain of 1.29 Mn/kg compared to the same period last year. With the increase in FOB price per Kg from LKR 555.64 to LKR 614.11 total export earnings too showed a gain of LKR 2.00 Billion as against the corresponding period last year.

Cumulative exports for the period January to April 2013 including Re-Exports with imported Tea recorded 92.81 Mn/Kg, showing a noteworthy decline of 3.62 Mn/Kg compared to the same period last year. However, with the increase in FOB price per Kg from LKR 533.82 to LKR 600.14 cumulative export earnings amounted to LKR 55.70 Billion, showing a gain of LKR 4.22 Billion as against the same period last year.

Country wise analysis of exports shows that the CIS countries (including Russia) continues as the largest export destination from Sri Lanka followed by Iran & Syria.

(Please refer page no.13 for more details)

CEYLON TEA BROKERS PLC – SALE NO. 20 OF 20TH / 21ST MAY 2013

ORDER OF SALE – SOLD THIS WEEK

Ex-Estate	H&M/OFF GRADE/DUST	LEAFY/TIPPY/SUP& BOP1A
CTB	Mercantile Produce Brokers(Pvt)Ltd	Ceylon Tea Brokers PLC
BART	Forbes & Walker Tea Brokers (Pvt) Ltd	Asia Siyaka Commodities (Pvt) Ltd
ASIA	Eastern Brokers Ltd	Eastern Brokers Ltd
F&W	John Keells PLC	Forbes & Walker Tea Brokers (Pvt) Ltd
EBL	Ceylon Tea Brokers PLC	Mercantile Produce Brokers(Pvt) Ltd
MBL	Bartleet Produce Marketing (Pvt) Ltd	Bartleet Produce Marketing (Pvt) Ltd
LCBL	Asia Siyaka Commodities (Pvt)Ltd	Lanka Commodity Brokers Ltd
JKL	Lanka Commodity Brokers Ltd	John Keells PLC

Catalogue	LOTS	QTY (KGS)
Ex- Estate	1,260	1,570,100
High & Medium	1,230	770,223
Low Grown (L)	4,222	2,183,493
Low Grown (S)	2,923	1,815,048
Off Grades/ BOP1A	1,899	1,176,498
Dusts	509	531,459
Supplementary	135	23,379
TOTAL	12,178	8,070,200

HIGH GROWN TEAS

Less demand

BOP	<i>Best western's - a select range sold around last levels. Others declined up to Rs.10/- per kg. Below best /plainer sorts declined Rs.5-10 per kg. Nuwara-Eliyas declined up to Rs.-20/- per kg. Uva / Udapussellawas declined Rs.5-10 per kg and more for the poor leaf teas.</i>
BOPF	<i>Best western's - irregularly easier following quality. Teas in the below best/plainer categories declined Rs. 15-20 per kg and more particularly as the sale progressed. Nuwara-Eliyas declined sharply. Uva/Udapussellawas declined Rs.5-10 per kg and more for the poor leaf teas.</i>
OP/OPA	<i>General market lower by Rs.5 – 10 per kg</i>
FBOP/FF1	<i>Best on offer dropped by Rs. 10 – 15 per kg whilst others met with fair demand</i>
PEK/PEK1	<i>General market met with fair demand</i>

MEDIUM GROWN TEAS

BOP	<i>Rs.10 per kg lower</i>
BOPF	<i>Rs.15-20 per kg lower.</i>
OP/OPA	<i>General market were irregularly lower</i>
FBOP/FF1	<i>Best on offer were dropped by Rs. 10 – 15 per kg whilst others followed by similar margin</i>
PEK/PEK1	<i>General market met with fair demand</i>

CTC

High Grown	<i>BP1^s irregular and Rs.5 – 10 per kg easier. PF1^s declined Rs.10 – 15 per kg and more for the poor leaf teas.</i>
Medium Grown	<i>BP1^s were irregular. PF1^s declined Rs.10 per kg and more for the poor leaf teas.</i>
Low Grown	<i>BP1^s were irregular. PF1^s High priced teas declined upto Rs.40 per kg. Others firm and Rs.10 -15 per kg lower.</i>

CEYLON TEA BROKERS PLC–SALE NO. 20 OF 20TH / 21ST MAY 2013

QUOTATIONS – High Grows	BOP		BOPF	
BEST WESTERNS	385	420	360	460
BELOW BEST WESTERNS	335	370	340	355
PLAINER WESTERNS	310	325	310	335
NUWAR A ELIYAS	320	370	375	400
UDAPUSSELLAWAS	270	320	280	300
BEST UVAS	370	460	325	335
OTHER UVAS	300	355	280	315
GOOD MEDIUMS	520	650	345	350
POOR MEDIUMS	380	500	315	325
QUOTATIONS – Unorthodox (CTC)	PF1		BP1	
CTC (High & Medium)	300	360	300	350
CTC (Low)	300	475	350	400

LOW GROWN

- BOP1** *Select best were barely steady. Others and a limited selection of clean below best maintained whilst others were lower Rs. 5 - 10 per kg.*
- OPI** *Select best together with clean/improved below best were fully firm to selectively dearer. Others were irregular following quality. At the lower end too prices were generally firm.*
- OPA** *Select best together with below best were lower Rs. 5 - 10 per kg and more. At the lower end however prices were fully firm to dearer.*
- PEKOE/PEKOE1** *Better types were firm. Below best too though irregular were firm. At the lower end prices commenced firm but were barely steady towards the close.*
- OP** *Better sorts declined. Others too were lower but to a lesser extent. At the lower end however prices were fully firm.*
- FBOP/ FBOP1** *Few select best teas maintained. Others together with best and below best were eased Rs.10 - 15 per kg and more following quality. Cleaner teas at the bottom maintained. Others were easier. Best FBOP1's firm. Others were discounted.*
- BOP** *Select best were firm. All others tended easier.*
- BOPF** *Best on offer were firm. Others were lower.*
- FBOPF/FBOPF1** *Well made tippy teas were firm to dearer. Cleaner teas in the best and below best too were firm. Others declined in value. Few well made FF1's were firm. Others in the best and below best were eased Rs. 10 - 15 per kg and more following quality. Cleaner teas at the bottom were firm to dearer. Others were easier.*

QUOTATION	SELECT BEST	BEST	BELOW BEST	OTHERS
FBOP1	550 – 600	480 – 500	420 – 430	400 – 420
FBOP	590 – 640	530 – 580	450 – 470	380 – 410
BOP1	570 - 700	490 – 550	430 – 480	360 – 420
BOP	570 – 640	510 – 530	420 – 460	400 – 410
BOPF	470 - 560	440 – 460	350 – 380	275 – 320
FBOPF/FBOPFSP	1000 – 1200	700 – 750	480 – 500	410 – 440
FBOPF1	550 – 580	520 – 540	460 – 500	400 – 430
FBOPF	650 – 720	570 – 600	460 – 480	400 – 430
OPI	590 – 720	540 – 580	470 – 530	350 – 440
OP	475 – 640	425 – 465	370 – 415	335 – 360
OPA	470 – 610	430 – 455	370 – 415	335 – 365
PEKOE	560 – 720	500 – 540	460 – 490	420 – 440
PEKOE 1	540 – 740	500 – 530	460 – 490	-

CEYLON TEA BROKERS PLC – SALE NO. 20 OF 20TH / 21ST MAY 2013

OFF GRADES

FGS/FGS1 : Best & below best liquoring sorts were easier Rs.5 – 10 per kg. Others declined Rs.10-15 per kg.

BP/BM : Best BM's together with below best sorts were firm on last. Others eased Rs.10 – 15 per kg.

BOPIA : Best were lower by Rs.5 – 10 per kg whilst below best were dearer by Rs.10 per kg and more.

QUOTATIONS	HIGH		MEDIUM		LOW	
BETTER FNGS	310	355	280	325	315	430
OTHER FNGS	235	305	230	275	240	310
P.FGS (CTC)	310	-	300	325	350	400
BP / BM	380	420	390	430	390	465
BOPIA	340	420	350	435	365	460

DUSTS/DUST1: Select best primaries sold at last levels. Low Growns declined Rs.10 – 15 per.

QUOTATIONS	HIGH		MEDIUM		LOW	
BETTER PRIMARY DUSTS	450	530	340	385	-	395
SECONDARY DUSTS	250	445	225	320	205	365
PDUST (CTC)	305	320	34	0375	410	460

TOP PRICES – HIGH AND MEDIUM TEAS

WESTERN MEDIUM

Nayapane	BOP	650.00
Harangala	BOPSP	540.00
Craighead	BOPF/BOPFSP	500.00
Doombagastalawa	BOP1	640.00
Imboolpittia	FBOP/FBOP1	620.00
Craighead	FBOPF/FBOPF1	560.00
Kenilworth	OP/OPA	470.00
Craighead	OP1	540.00
Craighead	PEK/PEK1	530.00
Doombagastalawa	PEK/PEK1	530.00

WESTERN HIGH

Brunswick	BOP	420.00
Queensberry	BOPSP	530.00
Laxapana	BOPF/BOPFSP	460.00
Queensberry	BOP1	530.00
Torrington	FBOP/FBOP1	540.00 @
Bogahawatte	FBOP/FBOP1	540.00
Glassaugh	FBOP/FBOP1	540.00
Bogahawatte	FBOPF/FBOPF1	540.00
Great Western	OP/OPA	560.00
Queesberry	PEK/PEK1	500.00
Bogahawatte	PEK/PEK1	500.00

UDAPUSSELLAWAS

Kirklees	BOP	390.00
Gordon	BOPSP	400.00
Kirklees	BOPF/BOPFSP	365.00
Gampaha	BOP1	470.00
Luckyland	BOP1	470.00
Gordon	FBOP/FBOP1	540.00
Gampaha	FBOPF/FBOPF1	530.00
Gampaha	OP/OPA	410.00
Gordon	OP1	445.00
Gampaha	PEK/PEK1	510.00

UVA MEDIUM

Demodera	BOP	510.00
Ambagasdowa	BOPSP	510.00
Ambagasdowa	BOPF/BOPFSP	405.00
Dickwella	BOP1	700.00
Shawlands	FBOP/FBOP1	580.00
Sarnia Plaiderie	FBOP/FBOP1	580.00
Dickwella	FBOPF/FBOPF1	540.00
Dickwella	OP/OPA	480.00
Sarnia Plaiderie	OP1	480.00
Sarnia Plaiderie	PEK/PEK1	530.00

UVA HIGH

Glenanore	BOP	500.00
Glenanore	BOPSP	470.00
Bandara Eliya	BOPF/BOPFSP	335.00
Spring Valley	BOP1	510.00
Craig	BOP1	510.00
Mount Uva	FBOP/FBOP1	540.00
Ampittiakande	FBOP/FBOP1	540.00
Ampittiakande	FBOPF/FBOPF1	520.00
Non Pareil	FBOPF/FBOPF1	520.00
Battawatte	OP/OPA	390.00
Aislabay	OP1	415.00
Spring Valley	PEK/PEK1	500.00
Poillakande	PEK/PEK1	500.00

NUWARA ELIYAS

Court Lodge	BOP	370.00
Mahagastotte	BOPF/BOPFSP	400.00
Lovers Leap	FBOP/FBOP1	560.00
Mahagastotte	OP/OPA	500.00
Court Lodge	PEK/PEK1	650.00

DENOTES – CEYLON TEA BROKERS PLC [@] / ALL TIME RECORD PRICE [] / EQUAL ALL TIME RECORD PRICE [*]**

CEYLON TEA BROKERS PLC –SALE NO. 20 OF 20TH / 21ST MAY 2013

UNORTHODOX TEAS (CTC)

HIGH GROWN – CTC	PF1		BP1		BPS		OF	
Dunsinane	360.00		365.00		330.00			
Florence					330.00			
MID GROWN – CTC								
Carolina	360.00							
Strathdon	360.00							
Rothschild			380.00					
New Peacock					350.00			
Duckwari							290.00	
LOW GROWN - CTC								
Daduwangala	500.00							
Cecilyan			400.00		400.00			
Suduwelipothahena			400.00					

TOP PRICES – LOW GROWN TEAS

LEAFY GRADES

Sithaka	BOP1	700.00	
Sithaka	OP1	720.00	
Sihara	OP	640.00	@
Himara	OP	640.00	@
Lickra	OP	580.00	@
Lickra	OPA	610.00	@
New Vithanakanda	PEKOE	720.00	
Wewelkandura Super	PEKOE	720.00	
Brombil	PEKOE	700.00	@
Nawalakanda Super	PEKOE1	740.00	
H.P.P. Tea	PEKOE1	740.00	
Brombil	PEKOE1	720.00	@

OFF GRADES

Daduwangala CTC	PF	400.00	
Wewelkandura	BM	465.00	
Nayapane	BP	430.00	
Wewelkandura	FGS/FGS1	430.00	
Nildiya Valley	BOP1A	460.00	
Avissawella	BOP1A	460.00	
Sachitha	BOP1A	460.00	@
Arbour Valley	BOP1A	460.00	
Nahinigala Super	BOP1A	450.00	@
Aberfoyle	BT	445.00	@

TIPPY/SMALL LEAF GRADES

New Panilkanda	BOP	640.00	
Pothotuwa	BOP	640.00	
Ivy Hills	BOP SP	630.00	
New Nivitigala	BOPF	560.00	
Nawalakanda Super	BOPF SP	580.00	
Sithaka	FBOP	800.00	
H.P.P. Tea	FBOP1	980.00	
H.P.P. Tea	FBOPF	1,500.00	
Uruwala	FBOPF1	680.00	@
Sachitha	FBOPF1	630.00	@
Deerwood Super	FBOPF SP	2,150.00	
Ehelakanda	FBOPF EX SP	2,900.00	
Brombil	FBOPF EX SP	1,950.00	@
Brombil	FBOPF EX SP	1,850.00	@

DUSTS

St Coombs	DUST1	530.00
Cee Tee Hills	PDUST	460.00

SUPPLEMENTARY

Nilwala	FBOPF SP	1,650.00
Magedara	FBOPF EX SP	2,450.00
Henford	FBOPF EX SP	1,600.00
Suwishka	FBOPF EX SP1	1,100.00

DENOTES – CEYLON TEA BROKERS PLC [@] / ALL TIME RECORD PRICE [] / EQUAL ALL TIME RECORD PRICE [*]**

CEYLON TEA BROKERS PLC – SALE NO. 20 OF 20TH / 21ST MAY 2013

OTHER ATTRACTIVE PRICES IN OUR CATALOGUE

LEAFY GRADES

KARAGODA	BOP1	700.00
BROMBIL	BOP1	675.00
MATUWAGALLA SUPER	BOP1	675.00
SIHARA	OP	640.00
YALTA	OP	530.00
NAHINIGALA SUPER	OP	520.00
LICKRA	OP1	680.00
SIHARA	OP1	670.00
LICKRA	OPA	610.00
MUSWENNA	OPA	575.00
SIHARA	OPA	575.00
GANGALAGAMUWA SUPER	PEKOE	630.00
BROMBIL	PEKOE1	700.00
NILGIRI	PEKOE1	690.00
SIRIMEWANA	PEKOE1	690.00

EX -ESTATE/HIGH & MEDIUM

ULAPANE HILLS	BOP	360.00
ULAPANE HILLS	BOP SP	450.00
GREENWOOD	BOP1	430.00
TORRINGTON	BOPA	395.00
HAUTEVILLE	BOPF	345.00
BROMBREEZE - CTC	BP1	310.00
MAHATENNA	FBOP	360.00
TORRINGTON	FBOPF	350.00
MAHATENNA	FBOPF1	540.00
MAHATENNA	OP1	400.00
GREENWOOD	OPA	335.00
ULAPANE HILLS	PEKOE	490.00
ULAPANE HILLS	PEKOE1	490.00
KALUBOWIT IYANA	PF1	450.00

SUPPLEMENTARY

ARUNA	FBOPF EX SP	1,000.00
DODANGODA	FBOPF EXSP1	460.00
ITHTHAGALLA SUPER	FBOPF SP	1,350.00
HENEGAMA SUPER	FBOPF SP	1,300.00

TIPPY/SMALL LEAF GRADES

DEERWOOD SUPER	BOP	610.00
SUSANTHA	BOP	590.00
TEMPLE VIEW SUPER	BOP SP	580.00
NEW FERNDAL	BOPA	530.00
AGILMA	BOPF	370.00
URUWALA	BOPF Sp	460.00
NILGIRI	FBOP	650.00
BROMBIL	FBOP	640.00
NAHINIGALA SUPER	FBOP	640.00
SUWISHKA	FBOP	640.00
HENEGAMA SUPER	FBOP1	610.00
RAINBOW	FBOP1	600.00
YALTA	FBOPF	720.00
AGILMA	FBOPF EX SP	1,650.00
KARAGODA	FBOPF EX SP	1,650.00
KARAGODA	FBOPF SP	1,810.00
THUNDOLA ELLA	FBOPF SP	1,200.00
NEW SOUTHERN HILL	FBOPF1	600.00
SIRIMEWANA	FBOPF1	590.00
LICKRA	FBOPF1	590.00

OFF GRADES

SUWISHKA	BM	440.00
SACHITHA	BOP1A	460.00
MULATIYANA HILLS	BOP1A	430.00
SINGHE VALLEY	BOP1A	430.00
HARVEST	BP	375.00
ABERFOYLE	BT	440.00
ZENRA	FGS	345.00
HARVEST	FGS1	335.00
KALLEBOKKE CTC	PF	265.00

DUSTS		
HAUTEVILLE	D1	380.00
VOGAN	DUST	325.00
NEW PEACOCK	PD	330.00

FUTURE SALES INFORMATION
NEXT SALE NO.21 SALE OF
28TH / 29TH MAY 2013

Ex-Estate	H/M-OFF GR & DUST	LEAFY/TIPPY/SUPP & BOP1A	Our Selling Time
ASIA	F&W	Asia Siyaka Commodities (Pvt) Ltd	28th May 2013
F&W	EBL	Forbes & Walker Tea Brokers (Pvt) Ltd	High & Medium 10.40 a.m
EBL	JKL	Mercantile Produce Brokers(Pvt) Ltd	BOP1A 5.10 p.m
MBL	CTB	Eastern Brokers Ltd	Low Grown (Tippy) 5.55 p.m
LCBL	BART	Bartlett Produce Marketing (Pvt) Ltd	Low Grown (Leafy) 11.45 a.m
JKL	ASIA	Lanka Commodity Brokers Ltd	29th May 2013
BART	LCBL	John Keells PLC	Ex-Estate 12.45 p.m
CTB	MBL	Ceylon Tea Brokers PLC	Supplementary 3.15 p.m
			Off Grades 11.40 a.m
			Dusts 5.05 p.m

Buyers Prompt : 04.06.2013 Sellers Prompt: 05.06.2013


Teas are now being offered for the Public Auction of -11th / 12th June, 2013

Ex Estate catalogue scheduled to be closed on the 23.05.2013 and Main Sale catalogue scheduled to be closed on the 23.05.2013 or earlier.

CEYLON TEA BROKERS PLC-SALE NO. 20 OF 20TH / 21ST MAY 2013

AWAITING SALE OFFERINGS

	SALE OF- 28 TH / 29 TH MAY 2013		SALE OF- 04 TH / 05 TH JUNE 2013	
	LOTS	QTY(KGS)	LOTS	QTY(KGS)
EX- ESTATE	1,195	1,449,426	1,091	1,345,006
HIGH AND MEDIUM	1,344	808,183	1,462	887,416
LOW GROWN (L)	3,898	1,992,804	3,291	1,636,775
LOW GROWN (S)	2,705	1,642,229	2,899	1,694,671
OFF GRADES+BOP1A	2,248	1,363,223	2,500	1,514,835
DUSTS	734	805,402	606	620,842
SUPPLEMENTARY	102	16,979	111	17,446
TOTAL	12,226	8,078,246	11,960	7,716,991
CLOSING DATES				
MAIN SALE	07/05 & 08/05/2013		14 & 15/05/2013	
EX-ESTATE	09/05/2013		16/05/2013	



**Use handling boxes
in the sifting room
to minimize
grit and moisture
absorption in teas**

WORLD TEA PRODUCTION (IN MILLION KILOS)

Country	Month + Year	Current Month	Previous Year	Cumulative Current	Cumulative Previous Year	Todate +/-
Sri Lanka	Apr. 2013	33.60	30.05	115.04	104.98	+10.06
Kenya	Mar. 2013	33.37	17.86	117.26	72.48	+44.78
Uganda	Mar. 2013	1.52	2.27	8.09	9.88	-1.79
North India	Mar. 2013	29.3	26.4	32.7	30.1	+2.6
South India	Mar. 2013	15.1	14.9	46.5	44.3	+2.2
Malawi	Jan. 2013	6.0	6.4	6.0	6.4	-0.4
Bangladesh	Jan. 2013	0.19	0.16	0.19	0.16	0.03
Indonesia (PTP only)	Dec. 2012	5.4	7.5	54.8	63.8	-9.0

(Source: Africa Tea Brokers)

CEYLON TEA BROKERS PLC-SALE NO. 20 OF 20TH / 21ST MAY 2013

ELEVATION WISE – STATISTICS - COLOMBO AUCTION AVERAGES

Elevation	WEEK BEFORE LAST	LAST WEEK	LAST YEAR
	(RS)	(RS)	(RS)
	Sale 07.05.2013	Sale 15.05.2013	Corres 2012
Uva High	360.29	348.17	327.30
Western High	355.50	351.88	358.93
CTC High	323.22	331.69	335.85
Total High Grown	356.72	350.76	348.54
Uva Medium	395.85	403.03	352.88
Western Medium	373.03	369.48	342.81
CTC Medium	322.92	314.71	324.23
Total Medium Grown	381.10	382.39	347.01
Orthodox Low	455.03	470.31	418.45
CTC Low	401.06	408.51	404.43
Total Low Grown	452.87	468.00	417.98
TOTAL	414.24	423.23	389.15

Elevation	WEEK BEFORE LAST	LAST WEEK	LAST YEAR
	(\$)	(\$)	(\$)
	Sale. 07.05.2013	Sale 15.05.2013	Corres 2012
Uva High	2.85	2.76	2.55
Western High	2.82	2.79	2.80
CTC High	2.56	2.63	2.62
Total High Grown	2.83	2.78	2.72
Uva Medium	3.13	3.19	2.75
Western Medium	2.95	2.93	2.67
CTC Medium	2.56	2.49	2.53
Total Medium Grown	3.02	3.03	2.70
Orthodox Low	3.60	3.72	3.26
CTC Low	3.18	3.24	3.15
Total Low Grown	3.59	3.71	3.26
TOTAL	3.28	3.35	3.03
Weekly Sale Averages - 1 USD= Rs. (Middle Rate)	126.29	126.27	128.32

Elevation	LAST YEAR	TODATE	LAST YEAR	TODATE
	2012	2013	2012	2013
	(RS)	(RS)	(\$)	(\$)
Uva High	316.76	369.78	2.60	2.93
Western High	354.19	409.50	2.91	3.24
CTC High	326.41	386.11	2.68	3.05
Total High Grown	343.45	399.50	2.82	3.16
Uva Medium	341.21	396.87	2.80	3.14
Western Medium	326.34	384.47	2.68	3.04
CTC Medium	314.12	372.62	2.58	2.95
Total Medium Grown	332.07	388.63	2.73	3.07
Orthodox Low	392.28	446.61	3.22	3.53
CTC Low	404.64	431.61	3.33	3.41
Total Low Grown	392.68	446.08	3.23	3.53
TOTAL	372.52	427.12	3.06	3.38
* Cumulative Sale Averages - 1 USD= Rs. (Weighted Average Middle Rate)			121.66	126.42

(Source:MSL/www.oanda.com)

CEYLON TEA BROKERS PLC – SALE NO. 20 OF 20TH / 21ST MAY 2013

MOMBASA AUCTION – SALE OF 20TH / 21ST MAY 2013

Fairly good demand at irregularly easier rates with prices closely following quality.

Brighter BP1s met good enquiry at fully firm to USC8 dearer with mediums irregular varying between firm to USC4 dearer to easier by USC4 to 14; lower mediums met good absorption at firm to USC8 dearer. Plainer descriptions were irregular and ranged between US4 to 12 dearer to easier by similar levels. Brighter PF1s met less interest and eased by USC5 to 15 while mediums were a weak feature ranging between firm rates to easier by USC8 to 20 and many lines remained unsold. Lower mediums held value to USC10 easier with plainer types irregular varying between USC5 dearer to easier by upto USC10 and many lines remained unsold. Brighter PDUSTs met an irregular enquiry and varied between USC2 dearer to easier by USC5 to 10 while mediums saw irregular competition and ranged between firm to USC10 dearer to easier by up to USC11 with lower mediums well competed for at USC2 to 10 above last prices. Plainer types held firm to USC11 below last levels. Brighter Dust1s were irregular and ranged between USC4 to 18 dearer to easier by upto USC5 while mediums varied between USC3 to 10 dearer to easier by USC2 to 14 with lower mediums gaining USC5 to 10. Plainer sorts held firm to USC8 above last prices.

In the secondary catalogues brighter BPs were dearer but others eased while PFs were irregularly firm to dearer. Clean well sorted coloury Fannings were about firm while similar Dusts were steady. Other Fannings were firm while Dusts gained. BMFs were well absorbed.

Afghanistan showed strong support with more enquiry from Yemen and other Middle Eastern countries and Pakistan Packers, Sudan, Kazakhstan(CIS), Russia and Bazaar maintained enquiry. UK remained selective while Egyptian Packers letn more activity. Iran was operating. Somalia continued active.

CTC QUOTATIONS	BP1 – USC	PF1 – USC	PD – USC	D1 - USC
Best	302 – 351	282 – 324	290 – 322	300 – 360
Good	300 – 322	280 – 289	275 – 302	308 – 316
Good Medium	300 – 326	275 – 291	263 – 314	266 – 320
Medium	270 – 308	222 – 278	236 – 259	238 – 265
Lower Medium	202 – 270	186 – 228	220 – 243	222 – 240
Plainer	185 – 256	135 – 226	134 – 236	130 – 236

AUCTION AVERAGE PRICES (in US\$ per kg)

SALE 19 HELD ON 13 & 14/05/2013

SALE 19 HELD ON 07 & 08/05/2012

COUNTRY	PRIMARY	SECONDARY	TOTAL	PRIMARY	SECONDARY	TOTAL
Kenya	2.66	1.55	2.59	3.21	1.62	3.08
Uganda	1.94	1.47	1.77	2.00	1.27	1.76
Rwanda	2.60	2.19	2.52	3.07	1.74	2.80
Burundi	2.37	1.92	2.31	2.94	2.24	2.88
Zambia	-	-	-	-	-	-
Tanzania	1.93	1.61	1.88	1.49	1.46	1.48
D R of Congo	1.85	1.91	1.88	-	1.69	1.69
Mozambique	1.75	1.37	1.50	1.14	0.91	1.04
Madagascar	-	-	-	-	-	-
Malawi	-	-	-	1.19	0.76	0.95
Zimbabwe	-	-	-	-	-	-
Ethiopia	-	-	-	-	-	-
Total	2.57	1.57	2.46	2.95	1.44	2.73

TO DATE: 2013

TO DATE: 2012

Kenya	2.96	1.73	2.88	3.08	1.61	2.98
Uganda	2.28	1.51	2.00	1.94	1.18	1.68
Rwanda	2.89	2.10	2.77	2.90	1.93	2.75
Burundi	2.79	2.09	2.72	2.85	2.04	2.78
Zambia	-	-	-	-	-	-
Tanzania	1.96	1.44	1.73	1.64	1.03	1.39
D R of Congo	2.20	1.93	2.13	1.86	1.58	1.78
Mozambique	1.79	1.21	1.46	1.11	0.89	0.99
Madagascar	2.20	1.85	2.04	2.02	1.33	1.73
Malawi	1.94	1.14	1.55	1.39	0.93	1.11
Zimbabwe	-	-	-	-	-	-
Ethiopia	-	-	-	-	-	-
Total	2.86	1.63	2.71	2.90	1.37	2.70

CEYLON TEA BROKERS PLC – SALE NO. 20 OF 20TH / 21ST MAY 2013

BANGLADESH AUCTION – SALE OF 21ST MAY 2013

CTC LEAF: Met with a fairly good demand.

BROKENS: Well made good liquoring Brokens continued to meet with a strong demand and were generally firm particularly the smaller varieties. These sold between Tk.283/- and Tk.290/-. Others were a fairly good market.

FANNINGS: Well made good liquoring Fannings were a good market were firm to slightly easier and these sold between Tk.285/- and Tk.290/-. Other varieties were also a good market and sold around last levels.

CTC DUST: Met with a good demand at around last levels. Select few lines of bright liquoring varieties were strongly competed for and were dearer by upto Tk.10/- and more. All others were about steady and eased slightly over last. Blenders and Loose tea buyers lent fairly good support.

COMMENTS: There was a little less demand this week. Blenders were fairly active but Loose tea buyers were selective. As a result, smaller grades were a little easier with some withdrawals. A few improved liquoring lines were strongly competed for and were dearer. Dusts were a fairly good market.

GUWAHATI AUCTION – SALE OF 21ST MAY 2013 (Preliminary)

MARKET: Good demand. All sorts irregularly lower. Limited weight of best Assams sold so far. TGBL and HUL operating on good and better sorts. Western India operating on liquoring varieties. North India selective. Fair Export enquiry on bolder Brokens.

KOLKATA AUCTION – SALE OF 21ST MAY 2013 (Preliminary)

MARKET: Fair demand. Select good liquoring Assams selling irregularly around last levels. remainder irregularly easier following quality. Western India operating. Tata Tea operating HUL selective Exporters operating. Local Buyers not seen so far

CEYLON TEA BROKERS PLC – SALE NO. 20 OF 20TH / 21ST MAY 2013

TEA PRODUCTION STATISTICS - APRIL 2013

We give below production figures for the month of April 2013, together with the corresponding figures of 2012(Kgs)

	2013		2012		DIFFERENT FROM LAST YEAR +/-	
	APRIL	TODATE	APRIL	TODATE	MONTH	CUMULATIVE
ORTHODOX						
High Grown	8,138,866.70	26,449,434.06	6,861,744.00	23,322,063.45	1,277,122.70	3,127,370.61
Medium Grown	4,702,104.50	14,232,714.00	4,455,422.00	13,784,928.65	246,682.50	447,785.35
Low Grown	18,049,171.75	65,049,559.00	16,236,014.50	59,759,560.50	1,813,157.25	5,289,998.50
Total	30,890,142.95	105,731,707.06	27,553,180.50	96,866,552.60	3,336,962.45	8,865,154.46

CTC

High Grown	396,200.00	1,325,586.00	368,120.00	959,801.00	28,080.00	365,785.00
Medium Grown	1,328,211.50	4,241,065.00	1,133,014.50	3,661,062.25	195,197.00	580,002.75
Low Grown	637,839.00	2,626,472.00	687,021.00	2,427,738.00	(49,182.00)	198,734.00
Total	2,362,250.50	8,193,123.00	2,188,155.50	7,048,601.25	174,095.00	1,144,521.75

TOTAL BLACK TEA PRODUCTION

High Grown	8,535,066.70	27,775,020.06	7,229,864.00	24,281,864.45	1,305,202.70	3,493,155.61
Medium Grown	6,030,316.00	18,473,779.00	5,588,436.50	17,445,990.90	441,879.50	1,027,788.10
Low Grown	18,687,010.75	67,676,031.00	16,923,035.50	62,187,298.50	1,763,975.25	5,488,732.50
Total	33,252,393.45	113,924,830.06	29,741,336.00	103,915,153.85	3,511,057.45	10,009,676.21

GREEN TEA

High Grown	115,066.00	336,790.50	93,147.00	326,256.00	21,919.00	10,534.50
Medium Grown	180,772.70	642,591.65	159,964.70	535,648.10	20,808.00	106,943.55
Low Grown	47,420.00	135,933.00	59,458.00	206,051.90	(12,038.00)	(70,118.90)
Total	343,258.70	1,115,315.15	312,569.70	1,067,956.00	30,689.00	47,359.15

TOTAL TEA PRODUCTION

High Grown	8,650,132.70	28,111,810.56	7,323,011.00	24,608,120.45	1,327,121.70	3,503,690.11
Medium Grown	6,211,088.70	19,116,370.65	5,748,401.20	17,981,639.00	462,687.50	1,134,731.65
Low Grown	18,734,430.75	67,811,964.00	16,982,493.50	62,393,350.40	1,751,937.25	5,418,613.60
Total	33,595,652.15	115,040,145.21	30,053,905.70	104,983,109.85	3,541,746.45	10,057,035.36

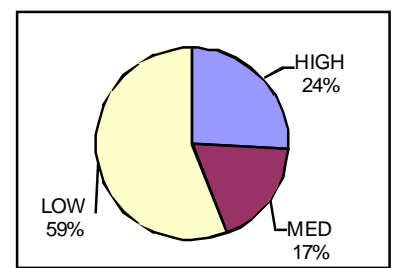
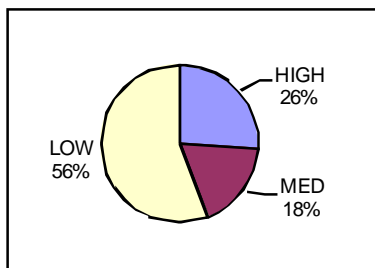
ANALYSIS OF TEA PRODUCTION %

	Month	Cumulative
High Grown	26.00	24.00
Medium Grown	18.00	17.00
Low Grown	56.00	59.00
Total	100.00	100.00

Month

ELEVATION BREAKDOWN

Cumulative



CTC PRODUCTION AS A PERCENTAGE OF BLACK TEA PRODUCTION

Month	7
Cumulative	7

CEYLON TEA BROKERS PLC-SALE NO. 20 OF 20TH / 21ST MAY 2013

SRI LANKA TEA EXPORTS

Description	April --2013			April --2012		
	Quantity (Kg)	Value (Rs)	FOB Price per Kg	Quantity (Kg)	Value (Rs)	FOB Price per Kg
Tea in Bulk	9,387,437	5,077,975,505	540.93	7,885,288	3,837,791,464	486.70
Tea in Packets	9,965,845	5,630,448,713	564.97	10,728,386	5,519,563,006	514.48
Tea in Bags	1,896,566	2,009,270,610	1,059.43	1,499,919	1,581,428,724	1,054.34
Instant Tea	192,078	187,827,452	977.87	90,903	79,980,142	879.84
Green Tea	390,673	502,158,046	1,285.37	333,271	392,790,974	1,178.59
Grand Total	21,832,599	13,407,680,326	614.11	20,537,767	11,411,554,310	555.64

Description	January to April --2013			January to April --2012		
	Quantity (Kg)	Value (Rs)	FOB Price per Kg	Quantity (Kg)	Value (Rs)	FOB Price per Kg
Tea in Bulk	39,305,119	21,006,242,690	534.44	39,093,598	18,138,566,137	463.98
Tea in Packets	43,934,178	24,070,409,023	547.87	47,586,145	23,474,532,854	493.31
Tea in Bags	7,504,467	8,079,437,287	1,076.62	7,669,824	7,692,129,483	1,002.91
Instant Tea	516,955	524,378,503	1,014.36	555,088	440,116,880	792.88
Green Tea	1,544,389	2,015,882,163	1,305.29	1,524,729	1,730,596,955	1,135.02
Grand Total	92,805,108	55,696,349,666	600.14	96,429,384	51,475,942,309	533.82

Sri Lanka Tea Exports – Country Wise

Country	Jan to April 2013	Jan to April 2012	Qty (M.Kg)
	Qty (Kg)	Qty (Kg)	
Russia	14,526,820	15,324,719	(0.80)
Iran	12,341,735	13,073,638	(0.73)
Syria	7,717,185	8,269,474	(0.55)
Turkey	7,035,638	6,064,475	0.97
U A E	5,733,117	3,137,953	2.60
Iraq	5,415,655	6,578,673	(1.16)
Other CIS Countries	4,505,781	4,959,896	(0.45)
Kuwait	3,455,340	1,625,239	1.83
Ukrain	2,947,893	3,417,270	(0.47)
Japan	2,921,413	3,128,099	(0.21)
Jordon	2,167,674	2,289,775	(0.12)
Libya	2,077,220	5,409,336	(3.33)
Germany	1,673,739	1,795,561	(0.12)
Hong Kong	1,622,403	1,482,005	0.14
Chile	1,538,431	2,297,877	(0.76)
Saudi Arabia	979,964	1,504,160	(0.52)
Netherland	784,431	703,759	0.08
Others	15,360,669	15,367,475	(0.01)
Total	92,805,108	96,429,384	(3.62)

Source: SL Customs - Statistical Division

CEYLON TEA BROKERS PLC – SALE NO. 20 OF 20TH / 21ST MAY 2013